

VENTA®  
BY BÜCHLIN DESIGN

2019

*"We have invested all of our energy into making our furniture as functional as possible, but with such elegant designs that this is not immediately obvious."*

*Karl Büchin, General Manager Büchin Design, Berlin*



## **Büchin Design develops, builds and sells individual furniture for the hotel industry and events catering business under the brand name „VENTA by Büchin Design“.**

The high-quality buffet furniture includes exclusive cocktail tables and stylish buffet tables as well as matching modern stools. Most VENTA furnishings can be folded up or stacked together to save space, and can be assembled and disassembled in just a few easy steps, without the need for any tools.

All of our buffet furniture is mobile and can be used anywhere. It meets the high demands of the hotel, events and catering industry in every respect.

Our VENTA products have an exclusive design and are available worldwide.

Most of our VENTA products are manufactured in Germany, and we are pleased to appear with the “Made in Germany” seal at trade fairs both in Germany and abroad.



Capsicum  
Boursin Bites

Lookbook  
Impressions



page 6

Modular Buffet  
on wheels



page 18

Warm  
Buffet



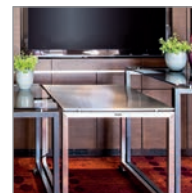
page 30

Cold  
Buffet



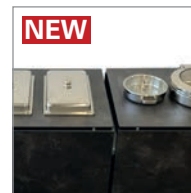
page 38

Teppan Grill  
Induction Cook



page 54

Chafing-Dish  
Table



page 61

Coffeestation  
Cupboard



page 72

Plate Warmer  
Service-Cart



page 76

Mobile Bar  
Hospi-Desk



page 82

Magnetic  
BLINDS



page 90

Heatbridge  
Sneeze-guard



page 98

Table  
Risers



page 102

Foldable Tables  
Etagere Tables



page 106

Cocktail Tables  
LED Frames



page 112

Stool+Chair  
Side Tables



page 124

LECTERN  
Podium



page 128

Features  
Material+Color



page 132

References  
Worldwide



page 146



Spicy Pumpkin  
Sunflower Seeds

Half Grain Buns  
Avocado Egg

Spicy  
Balls

Spicy  
Balls



My Food Favorites  
Healthy Bites







APPLE  
MARKET

APPLES

APPLES

APPLES

APPLES





table-top: compact panel  
decor: Lava Grey Fleetwood (419)









table-top: compact panel  
decor: Dark Grey Chicago Concrete (415)



STAGE\_80\_M/breakfast station





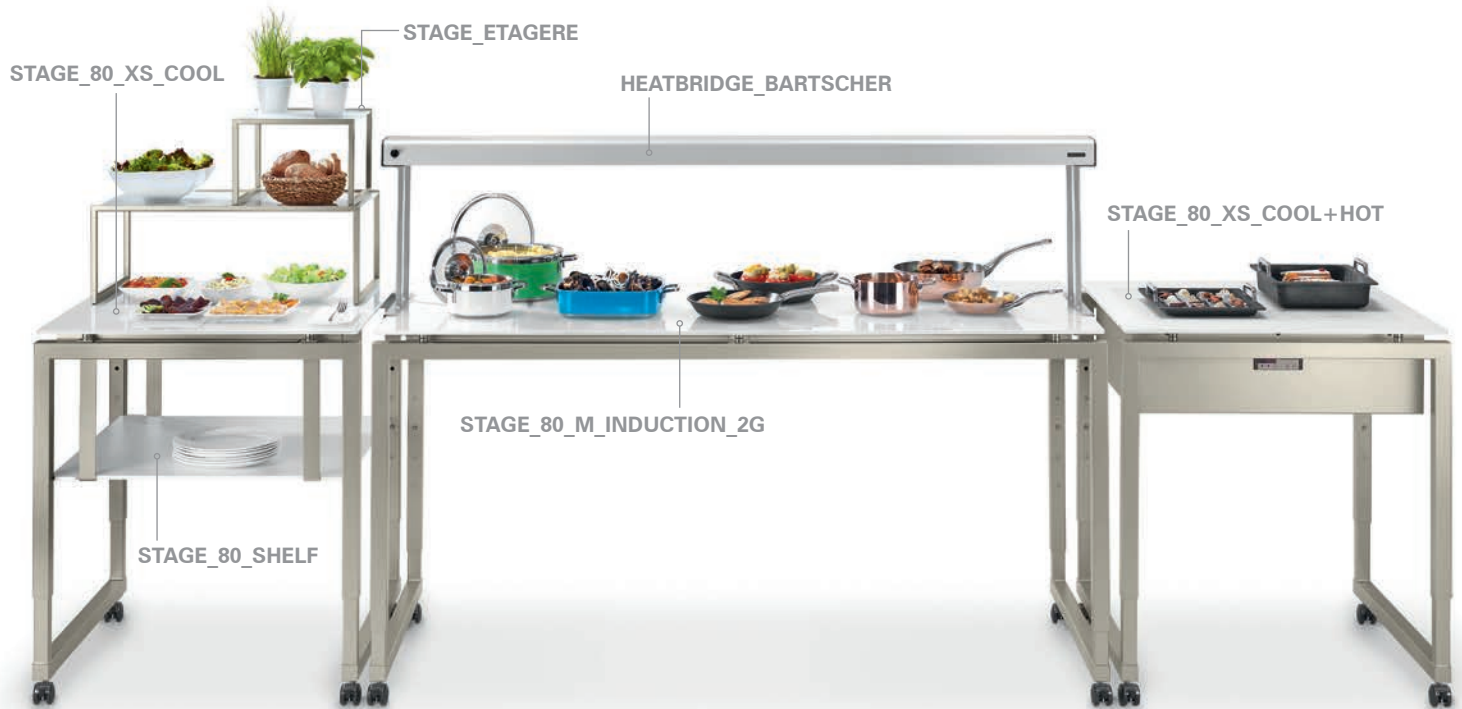


# Modular Buffet

buffet tables on wheels | height adjustable | nesting function



## STAGE – the modular buffet system



## Features

**SYSTEM SIZE** – Table system available in three standard lengths (L=196 cm, M=180 cm, 2 x XS=80 cm)

**NESTING** - the three standard sizes can be pushed together, so that only 1.96 m of the 5.36 m buffet table length is required as NESTING system.

**COMBINE** – system available in two table depths, 80 cm = classic buffet size/50 cm = table depth for smaller meeting rooms. Combinations of the two table depths result in interesting buffet variants or e.g. a MOBILE BAR.

**ADAPTIVE** - each table can be optimised for the respective area of use with additional equipment (e.g. shelves below the table surface for use as a plate shelf).

**CHANGEABLE** – a light, elegant buffet system consisting only a metal frame for the table legs and a transparent glass top. Or a buffet system with full equipment including appliances for heating and cooling, thermal bridges, shelves and blinds - STAGE can do both.

**FUNCTIONAL** – wheel diameter in three sizes suitable for the application: small = in the room or on the floor/medium = in the whole hotel, also suitable for lifts or smaller thresholds/large = inhouse and outdoor, also usable on the terrace.

**ADJUSTABLE HEIGHT** – four table heights can be adjusted at each table in a grid of 8 cm, thus enabling an interesting and varied furniture construction.

**MOBIL** - buffet table on wheels, which can be moved in any room and throughout the hotel, all wheels are lockable to fix the table in place.

**STORAGE** – if required, the system can be dismantled without tools and stowed in trolleys (wooden boxes on wheels), each part has a fixed place due to a grid system and cannot be damaged during transport.

**COLOR** – elegant lacquering of the table frames and the table tops (underside of the glass tops), so the matching color to the room concept is selectable.

**DECOR** – table tops available in „compact top“ material with various decorative surfaces (photo reproduction: wood, stone, metal).

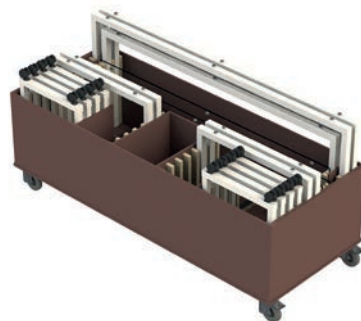
**BLINDS** – various decor panels to choose from, variants from completely closed to translucent, can be quickly assembled and disassembled by magnet attachment, enables „invisible supply“.

## STAGE - the modular buffet system

modern look & easy to move  
simple, functional, good-looking.

The modular buffet table system STAGE\_80 can be assembled and disassembled in just a few easy steps, without the need for any tools.

The trolley system allows you to storage all four tables in a mobile wooden box on wheels.

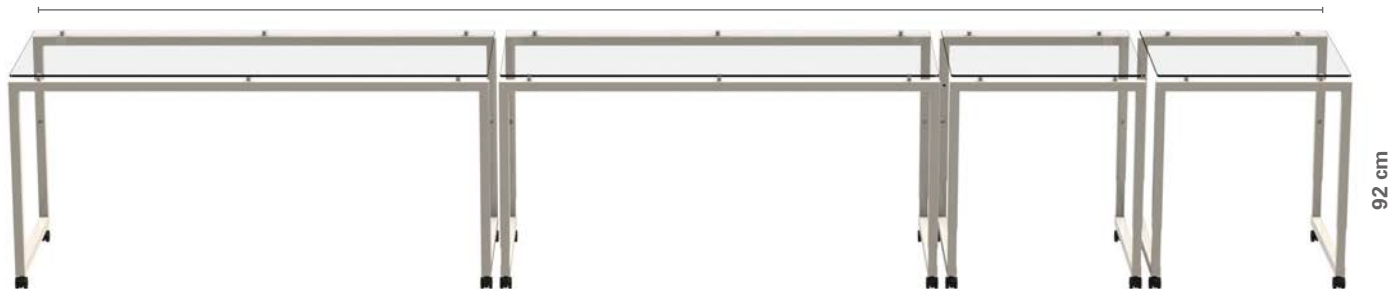


explosion view/  
main parts



**Item No.: 99106**  
Trolley/STAGE-System  
dimensions: 205 x 85 cm

total buffet length: 536 cm



all tables in a row/adjusted at the same height



**Item No.: 80001101300**  
L: 1960 x 800 x 920 mm  
M: 1800 x 800 x 840 mm  
2 x XS: 800 x 800 x 760mm  
total weight: 187 kg

## Three castor sizes for STAGE buffet-tables – generally recommended for indoor use.

Ø = 50 mm/standard size suitable for using on all grounds, but at the same level.



Ø = 65 mm/suitable for using an elevator (to cross the gap), for longer distance and high pile carpet.



Ø = 75 mm/suitable for using anywhere, especially for catering purposes.



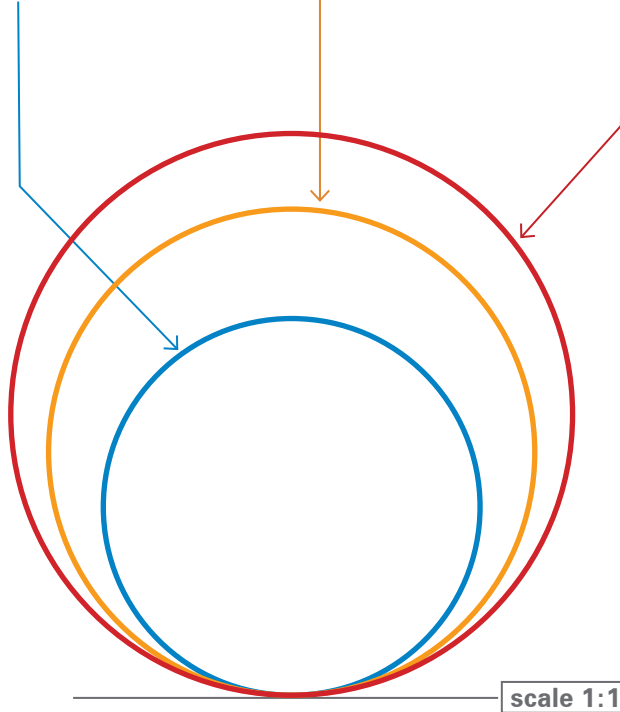


## Castor sizes – influence the height of the tables | all sizes useable for buffet purpose

table height: 92,0 cm  
Ø = 50 mm

table height: 93,5 cm  
Ø = 65 mm

table height: 94,5 cm  
Ø = 75 mm



## STAGE\_80 (set of 4)

### Item No.: 80001100300

L: 1960 x 800 x 920 mm  
M: 1800 x 800 x 840 mm  
2 x XS: 800 x 800 x 760 mm  
total weight: 187 kg

### Base

steel, powder-coated anthracite  
profile 40 x 40 mm, with height  
compensation  
weight: 25 kg, 23 kg, 2 x 18 kg

### Table-top

safety glass 10 mm,  
weight: 38 kg, 35 kg, 2 x 15 kg

### Height adjustable-system

L: 920, 1000, 1080, 1160 mm  
M: 840, 920, 1000, 1080 mm  
XS: 760, 840, 920, 1000 mm

### Individual

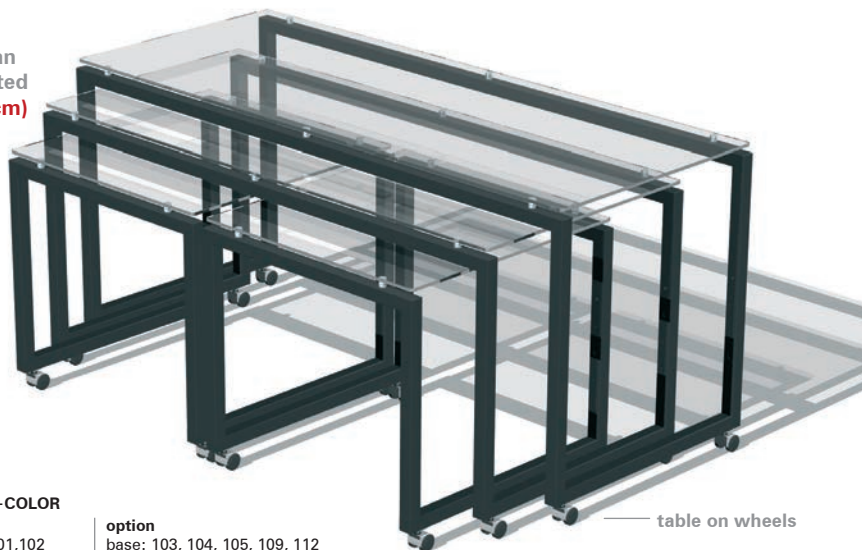
other colors on request



STAGE\_50

Buffet table is also  
available in **50 cm** width.

height can  
be adjusted  
**(76-116 cm)**



### MATERIAL+COLOR

#### basic

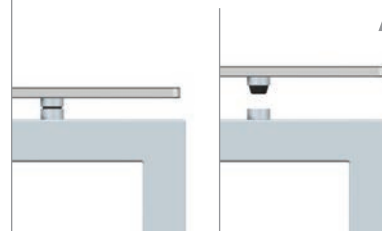
base: 100,101,102  
table-top: 300, 401, 402

#### option

base: 103, 104, 105, 109, 112  
table-top: 303, 305, 307, 308, 309, 310, 311, 319, 407, 409, 411, 412, 414, 415, 416, 417, 418, 419

— table on wheels

connection between table-top and base



arrangement of the four buffet tables



### Item No.: 99106

Trolley for 2 x STAGE\_80 (set of 4 tables)



weight: 65 kg [empty] / 439 kg [full]

# SHELF\_STAGE

**Item No.: 80010100402 (size L)**  
 L: 1900 x 728 x 350 mm / 23,5 kg  
 M: 1740 x 728 x 350 mm / 21,5 kg  
 XS: 740 x 728 x 350 mm / 11 kg

**Material\_1 (Shelf)**  
 compact plate, 10 mm, ceramic  
 anthracite  
 L: 1900 x 728 x 10 mm / 19 kg  
 M: 1740 x 728 x 10 mm / 17 kg  
 XS: 740 x 728 x 10 mm / 8 kg

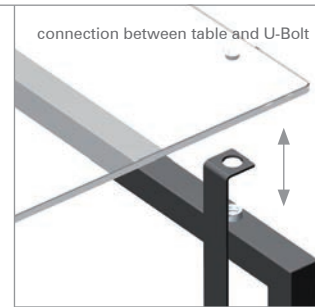
**Material\_2 (U-Bolt)**  
 steel, powder-coated anthracite,  
 system\_80: 716 x 40 x 350 mm,  
 weight: 1,5 kg

**Special features**  
 any other decor is available  
 (see page: 105, Option\_5)

**Individual**  
 other colors on request



connection between table and U-Bolt



shelf for STAGE\_80/size: M



shelf for STAGE\_80/size: XS



STAGE\_80/size: L

The shelf-system is also  
 available for the STAGE\_50.

**maximum load: 150 kg**  
**approx. 200 plates**

**MATERIAL+COLOR**

**basic**

base: 100,101,102  
 shelf: 401, 402

**option**

base: 103, 104, 105, 109, 112  
 shelf: 407, 409, 411, 412, 414, 415, 416, 417, 418, 419

— table on wheels

STAGE\_S (double table system)

Buffet system in size „S“ = 2 x XS/length: 160 cm  
usage of two different table-tops on one base frame



new product  
SNEEZEGUARD\_STAGE\_80\_XS

new product  
FRONTBLIND\_STAGE\_80\_S  
length: 160 cm

**MATERIAL+COLOR**

basic | option  
base: 100,101,102 | base: 103, 104, 105, 109, 112

table also available in smaller depth of 50 cm:  
base\_STAGE\_50\_S/Item No.: 50019



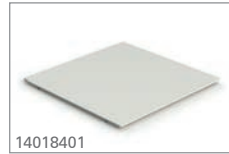
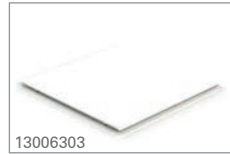
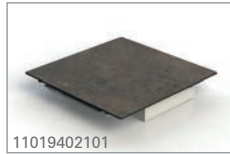
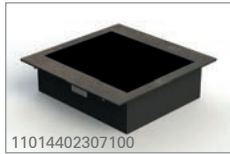
base\_STAGE\_80\_S/Item No.: 80039



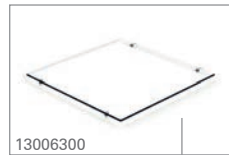
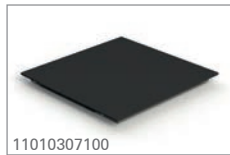
buffet island (160 x 160 cm)



STAGE\_S [benefits and usage]



*combine your favorite table-tops*

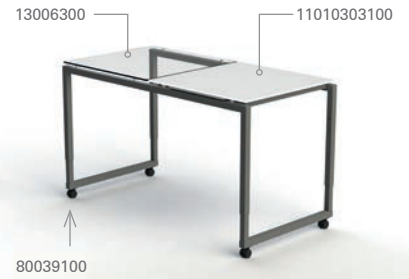


Item No.: 13006300

Item No.: 80039100



80039100



80039100

11028100401 (2 x BAIN-MARIE + 4 x GN 1/1)



80039100

# Warm Buffet

buffet tables with invisible induction devices to keep the food warm



Item No.: 80049101303





**The new highlight of our furniture range is the STAGE\_80\_M\_INDUCATION\_2G buffet table with integrated surface induction.**

**You can place three to four pots on the four induction hobs and set the temperature for each hob individually.**

Table with four integrated induction fields to keep the food warm on a buffet. Each induction field can run individually. You can adjust four different levels (40°-90°C). The first level corresponds to approximately 40°C, depending on the used pot. On each induction field (measures: 34 x 34 cm) you can place several pots to keep them warm.

This technology was developed by the Swiss company GASTROS and is marketed under the brand name InductWarm Series 130. Büchin Design is the only company who offers this technology integrated in its mobile buffet tables.



Item No.: 80049101401  
table-top: compact panel, white



Item No.: 80049101307  
table-top: glass, black



Item No.: 80049101402  
table-top: compact panel, ceramic anthracite

Item No.: 80049101303



The advantage of this induction-table are two different materials for the table-top. You can choose the table-top in glass (underside colored) or in the material „compact panel“.

„Compact panel“/definition: compact laminates have a multilayer structure and consist of melamine resin impregnated decorative paper and multiple layers of soda kraft paper impregnated with phenolic resins, which are laminated under high pressure and heat.



**basic:**  
table-top: 401, 402  
**option**  
table-top: 303, 307, 407, 409, 411, 414, 415, 416, 417, 418, 419

## STAGE\_80\_M\_INDUCTION\_2G

### Item No.: 80049100402

[LxWxH]: 1800 x 800 x 840 mm  
height adjustable: 920, 1000, 1080 mm  
weight: 88,5 kg (with glass-top)  
weight: 75 kg (with compact panel)

### Base

steel, powder-coated anthracite  
profile 40 x 40 mm, on wheels with  
height compensation  
weight: 17 kg

### Table-top

1790 x 790 x 10 mm,  
weight: 35 kg (glass-top)  
weight: 20,8 kg (compact panel)

### Metal housing

metal plate, 1,5 mm, powder-coated  
weight: 6,9 kg

### Induction (4 devices)

induction system: InductWarm  
manufacturer: Gastros AG Switzerland  
model: InductWarm 130  
measures: (L x W x H) 35 x 35 x 11 cm  
weight: 5,3 kg  
voltage range: 220-240V AC  
maximum power input: 750 W  
electrical fuse protection: 10 A  
frequency: 50 Hz

perfect system to  
keep the food warm  
(no cooking)



### MATERIAL+COLOR

#### basic

base: 100,101,102  
table-top: 401, 402

#### option

base: 103, 104, 105, 109, 112  
table-top: 303, 307, 407, 409, 411, 412, 414, 415, 416, 417, 418, 419

table also available in smaller depth of 50 cm:  
STAGE\_50\_XS\_INDUCTION\_2G  
and STAGE\_50\_M\_INDUCTION\_2G



explosion view



### Item No.: 99110

Trolley for 2 x induction table STAGE\_M (50 or 80)



weight: 65 kg [full]/215 kg [empty]

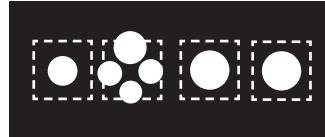
# Benefits

STAGE\_80\_XS\_INDUCTION\_2G

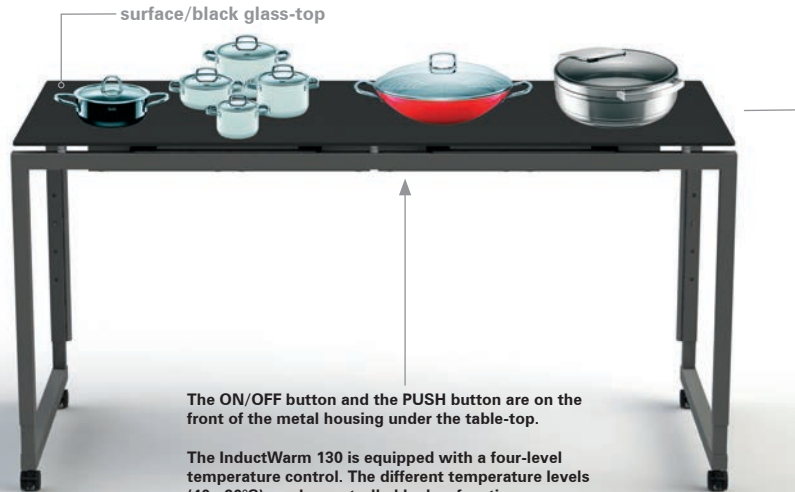


Item No.: 80040101402

four fields to place chafing dishes and/or pots  
four fields with different temperature options



top-view/example: positioning of the pots



The ON/OFF button and the PUSH button are on the front of the metal housing under the table-top.

The InductWarm 130 is equipped with a four-level temperature control. The different temperature levels (40 - 90°C) can be controlled by key functions.

The first level corresponds to approximately 40°C.

Item No.: 80049100307

invisible built-in:  
4 x InductWarm 130 device



## IMPORTANT !

The usage of the SILICONE MAT is mandatory.

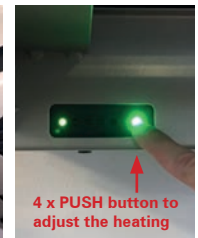


It saves the surface of the table-top in case of overheating and avoids the movement of the pot from the induction field.

positions of the buttons under the table



4 x button ON/OFF



4 x PUSH button to adjust the heating

# COOL + HOT

cool or hot – as you desire – in one table



Item No.: 80063101401





## BAIN-MARIE

**The buffet table STAGE\_80\_XS\_BAIN-MARIE\_COOL+HOT is a stainless steel basin of size 2/1 GN which contains a COOL+HOT unit.**

This technology was developed by Höller, one of a small number of companies worldwide who offer this technology in small and convenient units. This cold-hot plate enables you to keep dishes cool at temperatures as low as -5°C or to switch on the heating function. A hot plate keeps dishes warm. This has the added benefit that you do not have to use induction-compatible cookware, but can also use porcelain cookware, for example.

The buffet table has an area of 80 x 80 cm, while the integrated hob measures GN 2/1 (i.e. 66 x 53 cm). Power is supplied via a standard power cable (230 V). Heavy current is not required.

The equipment runs very quietly and energy-efficiently.



Item No.: 80063101401 (different types of use)

**Item No.:** 80063100402

[LxWxH]: 800 x 800 x 760 mm  
(ad. height: 840, 920, 1000 mm)  
weight: 71,6 kg

**Base**

steel, powder-coated anthracite  
profile 40 x 40 mm, on wheels  
with height compensation,  
weight: 13,6 kg

**Table-Top**

compact panel, 10 mm,  
790 x 790 mm,  
decor: ceramic anthracite  
weight: 3,9 kg

**Inlay**

compact panel, 10 mm,  
ceramic anthracite  
weight: 2,6 kg (each inlay)

**COOL+HOT-unit**

size: 2/1 GN (660 x 530 mm)  
stainless steel (inside)  
metal housing (outside)  
powder-coated  
weight: 48,9 kg

**COOL** or **HOT**  
combined in one table

The **HOT**-mode keeps the  
food warm, **no cooking!**

2 x GN (1/1)



left side closed with chafing dish lid/right side  
closed with inlay



table surface closed with two inlays



↑  
height can be  
adjusted  
(76 - 100 cm)  
↓

**MATERIAL+COLOR**

**basic**

base: 100,101,102  
table-top: 401, 402

**option**

base: 103, 104, 105, 109, 112  
table-top: 407, 409, 411, 412, 414, 415, 416, 417, 418, 419

## Benefits

**-5°C / +110°C**  
temperature range

**SIZE: 2/1 GN**  
**660 x 530 mm**  
**Depth: 105 mm**

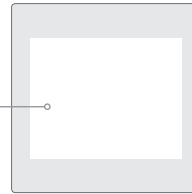


table on wheels

multifunctional well Hot-Cold (2/1 GN)  
measures: 770 x 630 x 250 mm



height:  
250 mm

features: multifunctional well Hot-Cold with two inlays, Bain-Marie: adjustable from 30°C up to 110°C/static cooling: up to -5°C, max. ambient temperature 25°C, CW unit: GN 2/1, 230V, heat output: 1800 Watt, coolant: R600a, cooling output: 140 Watt



touch panel on the front of the table



Item No.: 80006101401303



**Another technical gem is our STAGE\_80\_XS\_COOL+HOT buffet table with a glass surface, which houses a cold-hot plate.**

This technology was developed by Höller, one of a small number of companies worldwide who offer this technology in small and convenient units. This cold-hot plate enables you to keep dishes cool at temperatures as low as  $-5^{\circ}\text{C}$  or to switch on the heating function. A hot plate keeps dishes warm. This has the added benefit that you do not have to use induction-compatible cookware, but can also use porcelain cookware, for example.

The buffet table has an area of 80 x 80 cm, while the integrated hob measures GN 2/1 (i.e. 66 x 53 cm). Power is supplied via a standard power cable (230 V). Heavy current is not required.

The equipment runs very quietly and energy-efficiently.

**Item No.:** 80006100402307

[LxWxH]: 800 x 800 x 760 mm  
(ad. height: 840, 920, 1000 mm)  
weight: 60 kg

**Base**

steel, powder-coated anthracite  
profile 40 x 40 mm, on wheels  
with height compensation,  
weight: 13,6 kg

**Table-Top**

compact plate 10 mm, 790 x 790 mm,  
decor: ceramic anthracite  
weight: 4 kg

**Cover**

metal box, 1,5 mm,  
powder-coated anthracite  
weight: 12 kg

**COOL+HOT-unit**

size: 2/1 GN (660 x 530 mm)  
glass-top, black colored (307)  
or white colored (303)  
weight: 26 kg

**COOL** or **HOT**  
combined in one table

The **HOT-mode** keeps the  
food warm, **no cooking!**



height can be  
adjusted  
(76 - 100 cm)

**MATERIAL+COLOR**

**basic**

base: 100,101,102  
table-top: 401, 402

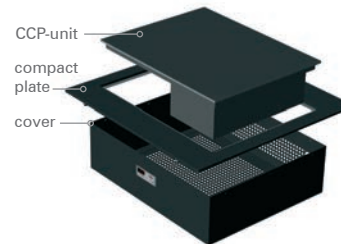
**option**

base: 103, 104, 105, 109, 112  
table-top: 407, 409, 411, 412, 414, 415, 416, 417, 418, 419

connection between table-top and base



explosion view/main parts



dismantling the cover for service



## Benefits

**-3°C / +120°C**  
temperature range

maximum load: 80 kg

SIZE: 2/1 GN  
660 x 530 mm



table on wheels

CCP (comfort-combi-plate) 2/1 GN  
measures: 660 x 530 mm



height:  
190 mm

technical details:

CCP built-in system, 2/1 GN, size: 660 x 530 mm,  
height: 190 mm, power supply: 230V, heat output:  
1400W, coolant: R600a, cooling output: 140W



touch panel on the front of the table



# COOL

cooling – without plug





Item No.: 80007101303



**Our exclusive STAGE\_80\_XS\_COOL table with integrated cold plates works without the need for any power cables.**

You place this table anywhere in the room – no need for power sockets.

Before use, the cold plates must be stored in the freezer room of the hotel or event location for around twelve hours at  $-18^{\circ}\text{C}$ . Then the COOL table can be used for approximately five hours.

The temperature of the table surface is approx.  $5^{\circ}\text{C}$ . The table is designed for indoor use with an ambient temperature of approx.  $21^{\circ}\text{C}$ .

Outdoor use with higher temperatures is not possible.

**Item No.: 80007100303**

[LxWxH]: 800 x 800 x 760 mm  
(ad. height: 840, 920, 1000 mm)  
weight: 46,7 kg

**Base**

steel, powder-coated anthracite  
profile 40 x 40 mm, with height  
compensation, weight: 13,6 kg

**Table-top**

safety glass 10 mm, 790 x 790 mm,  
weight: 15 kg  
underside white colored

**Bowl (for COOL-plates)**

metal plate, 1,5 mm, powder-coated  
anthracite  
weight: 8,5 kg

**Individual**

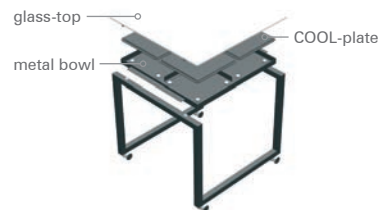
other colors on request

**5h cooling**  
**5°-10°C**  
on the table surface  
without electricity

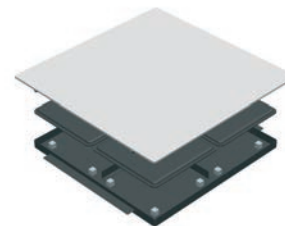
connection between table-top and base



explosion view/main parts



metal bowl with 4 x COOL-plate



height can be  
adjusted  
(76 - 100 cm)

**MATERIAL+COLOR**

**basic**

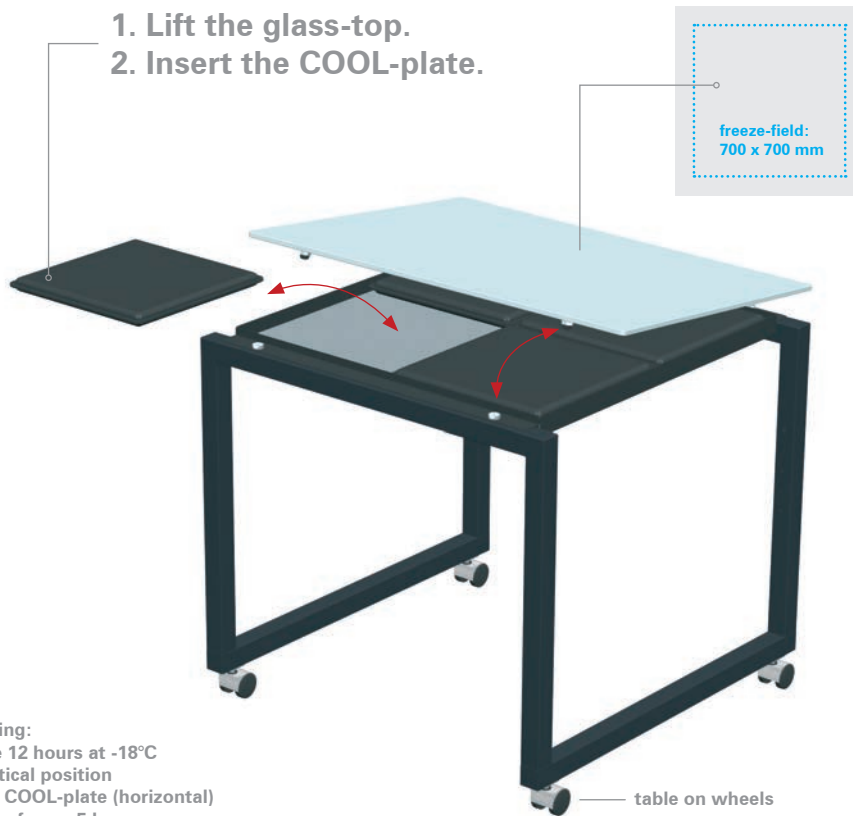
base: 100,101,102  
table-top: 303, 307

**option**

base: 103, 104, 105, 109, 112  
table-top: 308, 309, 310, 311, 319

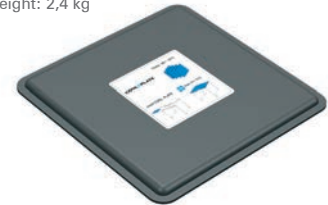
## Benefits

1. Lift the glass-top.
2. Insert the COOL-plate.



handling:  
freeze 12 hours at  $-18^{\circ}\text{C}$   
in vertical position  
insert COOL-plate (horizontal)  
usage of max. 5 hours  
 $5-10^{\circ}\text{C}$  on the table surface

COOL-plate  
350 x 350 x 25 mm  
weight: 2,4 kg



trolley for 8 x COOL-plate



Item No.: 99129  
Trolley for 8 x COOL\_PLATE



weight: 15 kg [empty] / 30 kg [full]

# TEPPAN GRILL

special round teppan technology



# STAGE\_80\_XS\_TEPPAN\_GRILL

## Item No.: 80009100

[LxWxH]: 800 x 800 x 760 mm  
(ad. height: 840, 920, 1000 mm)  
weight: 40 kg

## Base

steel, powder-coated anthracite  
profile 40 x 40 mm, on wheels  
with height compensation  
weight: 18 kg

## Table-Top (electrical device)

TEPPAN GRILL by CDS-Design GmbH  
(manufacturer)  
material: stainless steel, matt abraded  
electric: 230V / 50-60Hz / 2200 Watt  
weight: 25,8 kg

## Individual

other base frame colors on request

perfect system for **cooking**  
direct on the table surface



height can be  
adjusted  
(76 - 100 cm)

## MATERIAL+COLOR

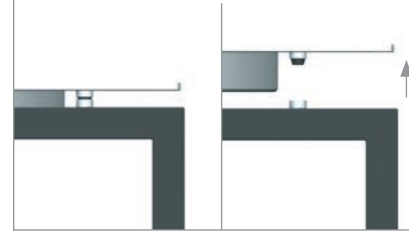
### basic

base: 100,101,102  
table-top: st. steel

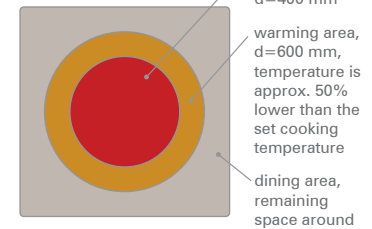
### option

base: 103, 104, 105, 109, 112  
table-top: stainless steel

connection between table-top and base



heat-system



## Item No.: 99120

Trolley for max. 2 x STAGE\_80\_XS\_TEPPAN\_GRILL



weight: 50 kg [empty]/130 kg [full]



# STAGE\_80\_XS\_TEPPAN\_GRILL

**recommended combination:**

**STAGE\_80\_XS\_TEPPAN\_GRILL  
with cover-plates**

**STAGE\_80\_XS  
standard model (optional with black  
glass-top)**



detail view – table-top and base



table-top-unit



temperature dial (1-10)



# INDUCTION COOK

VENTA cooking station



# STAGE\_80\_XS\_INDUCTION\_COOK

**Item No.:** 80008101401

[LxWxH]: 800 x 800 x 760 mm  
 (ad. height: 840, 920, 1000 mm)  
 weight: 35,0 kg

**Base**

steel, powder-coated anthracite  
 profile 40 x 40 mm, on wheels  
 with height compensation  
 weight: 18 kg

**Table-Top**

material: compact panel, 10 mm  
 total weight: 17,0 kg (incl. electrical  
 devices)

**Electrical Device**

2 x induction field by SPRING Interna-  
 tional GmbH (manufacturer)  
 electric: 230V / 50-60Hz / each unit:  
 2,5kW, temperature adjustable on  
 touch field directly on the unit

**Individual**

other base frame and table-top colors  
 on request

**adjustable cooking  
 temperature of  
 240°C**

each field  
 36 x 36 cm



**MATERIAL+COLOR**

**basic**

base: 100,101,102  
 table-top: 401, 402

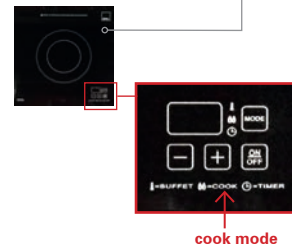
**option**

base: 103, 104, 105, 109, 112  
 table-top: 407, 409, 411, 412, 414, 415, 416, 417, 418, 419

top view



touch field



**Item No.:** 99119

Trolley for max. 2 x STAGE\_80\_XS\_IND\_COOK



weight: 50 kg [empty]/120 kg [full]

# STAGE\_80\_XS\_INDUCTION\_COOK

Item No.: 80008100402



For every table you will receive 6 x silicone mat.



**Attention!**  
Place the hot pots  
and pans only on  
the silicone mats.  
Never direct on  
the table-top. The  
surface will be  
damaged!



# Chafing-Dish

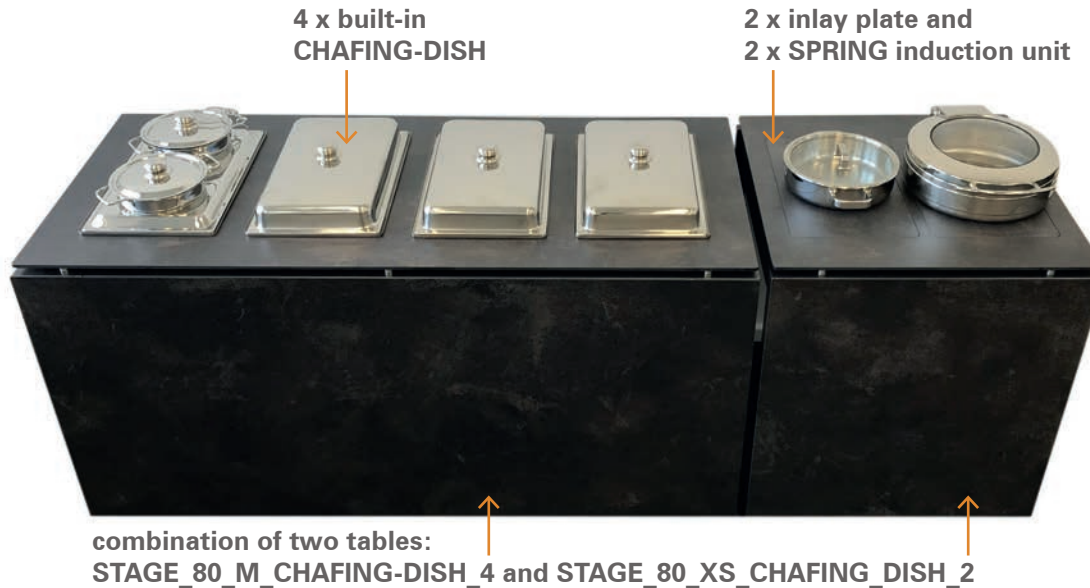
fully integrated in a decorative table-top surface



## STAGE – CHAFING-DISH System

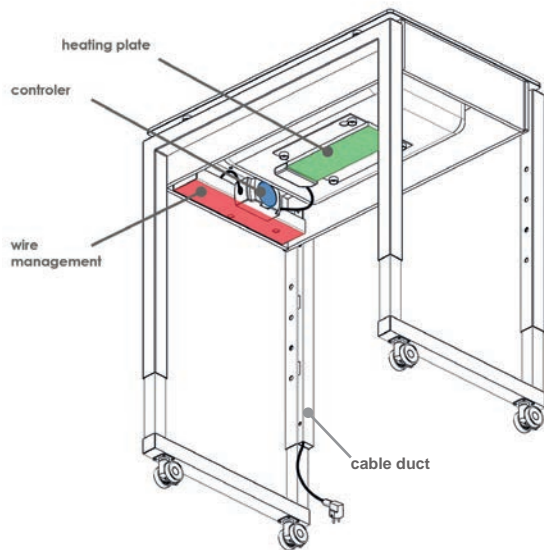
simple, functional, easy to handle

Buffet-tables with openings to install CHAFING-DISH units, which are fully integrated in the table surface. VENTA recommends to use SPRING or WMF units as we designed a special magnetice holder to place the remote control direct under the table.





# CHAFING-DISH – additional equipment



**built-in chafing-dish  
ECO\_SPRING**



Item No.: 12300

This block shows a built-in chafing-dish unit, model ECO\_SPRING, with item number 12300. It is a rectangular, black, built-in unit designed for integration into the chafing-dish frame.

**electric heating unit  
SPRING**



Item No.: 12301

This block shows an electric heating unit, model SPRING, with item number 12301. It consists of a rectangular heating element with a power cord and a control knob.

**SPRING induction unit  
1000W round**



Item No.: 12303

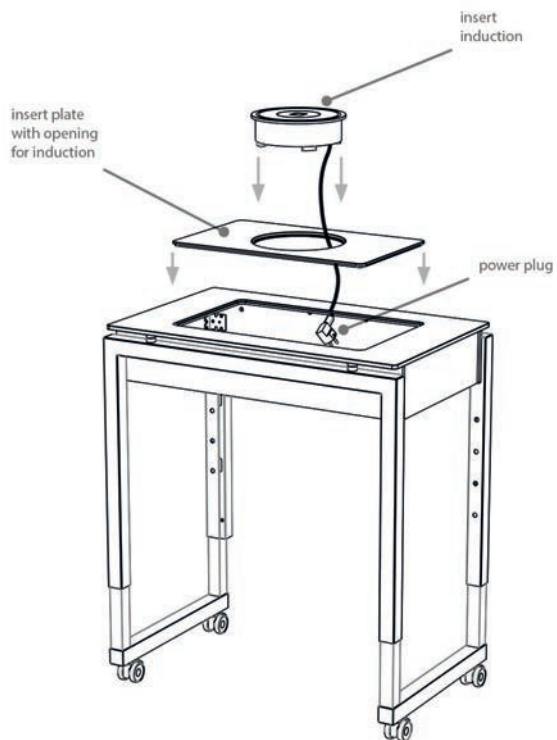
This block shows a round induction unit, model SPRING, with item number 12303. It is a circular induction cooktop with a power cord and a control knob.

**inlay\_plate\_induction\_STA-  
GE\_CHAFING-DISH**



Item No.: 14063

This block shows an inlay plate induction unit, model STA-GE\_CHAFING-DISH, with item number 14063. It is a square plate with a circular opening in the center, designed to fit into the chafing-dish frame.



**Item No.: 80078100402**

[LxWxH]: 1800 x 800 x 840 mm  
 adjustable height: 920, 1000, 1080 mm  
 weight: 44,5 kg

**Base**

steel, powder-coated, color: anthracite  
 profile 40 x 40 mm, on wheels,  
 diameter=50 mm  
 (all wheels with brake)  
 weight: 17,0 kg  
 base is height adjustable

**Table-Top**

compact panel, 10 mm,  
 decor: ceramic anthracite  
 weight: 27,5 kg

**OPTION\_1**

**additional electrical equipment**  
 electric\_heating\_unit\_SPRING (item-  
 number: 12301) 50-60 Hz, 230V  
 (SPRING: 60 9505 80 01)

**OPTION\_2**

**additional electrical equipment**  
 SPRING\_Induction\_Unit\_1000W  
 Round (item-number: 12303) 230 V /  
 50 Hz / 1000 Watt, (SPRING: 58 9842  
 10 24)

perfect system  
 to present warm food in  
 integrated chafing-dish



**MATERIAL+COLOR**

**basic**

base: 100,101,102  
 table-top: 401, 402

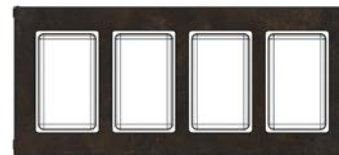
**option**

base: 103, 104, 105, 109, 112  
 table-top: 407, 409, 411, 412, 414, 415, 416, 417, 418, 419

combination of STAGE\_80\_M\_CHAFING-DISH\_4  
 and STAGE\_80\_XS\_CHAFING-DISH\_2 + BLINDS



top view



**Item No.: 99144**

Trolley for max. 2 x table 80\_M\_CHAFING-DISH



weight: 65 kg [empty]/154 kg [full]

STAGE\_80\_XS\_CHAFING-DISH\_2

**Item No. : 80080100402**

[LxWxH]: 800 x 800 x 840 mm  
adjustable height: 920, 1000, 1080 mm  
weight: 27 kg

**Base**

steel, powder-coated, color: anthracite  
profile 40 x 40 mm, on wheels,  
diameter=50 mm  
(all wheels with brake)  
weight: 13,6 kg  
base is height adjustable

**Table-Top**

compact panel, 10 mm,  
decor: ceramic anthracite  
weight: 23,4 kg

**OPTION\_1**

**additional electrical equipment**  
electric\_heating\_unit\_SPRING (item-  
number: 12301) 50-60 Hz, 230V  
(SPRING: 60 9505 80 01)

**OPTION\_2**

**additional electrical equipment**  
SPRING\_Induction\_Unit\_1000W\_  
Round (item-number: 12303) 230 V /  
50 Hz / 1000 Watt, (SPRING: 58 9842  
10 24)

system suitable for  
chafing-dish units by  
SPRING or WMF



**MATERIAL+COLOR**

**basic**

base: 100,101,102  
table-top: 401, 402

**option**

base: 103, 104, 105, 109, 112  
table-top: 407, 409, 411, 412, 414, 415, 416, 417, 418, 419

combination of STAGE\_80\_M\_CHAFING-DISH\_4  
and STAGE\_80\_XS\_CHAFING-DISH\_2

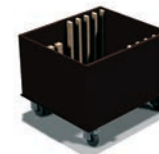


top view



**Item No. : 99145**

trolley for max. 2 x table 80\_XS\_CHAFING-DISH



weight: 50 kg [empty]/104 kg [full]

**Item No.: 80079100402**

[LxWxH]: 1800 x 800 x 840 mm  
adjustable height: 920, 1000, 1080 mm  
weight: 46,0 kg

**Base**

steel, powder-coated, color: anthracite  
profile 40 x 40 mm, on wheels,  
diameter=50 mm  
(all wheels with brake)  
weight: 17,0 kg  
base is height adjustable

**Table-Top**

compact panel, 10 mm,  
decor: ceramic anthracite  
weight: 29,0 kg

**OPTION\_1**

**additional electrical equipment**  
electric\_heating\_unit\_SPRING (item-  
number: 12301) 50-60 Hz, 230V  
(SPRING: 60 9505 80 01)

**OPTION\_2**

**additional electrical equipment**  
SPRING\_Induction\_Unit\_1000W  
Round (item-number: 12303) 230 V /  
50 Hz / 1000 Watt, (SPRING: 58 9842  
10 24)

perfect system  
to present warm food in  
integrated chafing-dish



**MATERIAL+COLOR**

**basic**

base: 100,101,102  
table-top: 401, 402

**option**

base: 103, 104, 105, 109, 112  
table-top: 407, 409, 411, 412, 414, 415, 416, 417, 418, 419

STAGE\_80\_M\_CHAFING-DISH\_3 + BLINDS



top view



**Item No.: 99144**

Trolley for max. 2 x table 80\_M\_CHAFING-DISH



weight: 65 kg [empty]/157 kg [full]

STAGE\_80\_XS\_CHAFING-DISH\_1

**Item No.:** 80081100402  
 [LxWxH]: 800 x 800 x 760 mm  
 adjustable height: 840, 920, 1000 mm  
 weight: 27,0 kg

**Base**  
 steel, powder-coated, color: anthracite  
 profile 40 x 40 mm, on wheels,  
 diameter=50 mm  
 (all wheels with brake)  
 weight: 13,6 kg  
 base is height adjustable

**Table-Top**  
 compact panel, 10 mm,  
 decor: ceramic anthracite  
 weight: 23,4 kg

**OPTION\_1**  
**additional electrical equipment**  
 electric\_heating\_unit\_SPRING (item-  
 number: 12301) 50-60 Hz, 230V  
 (SPRING: 60 9505 80 01)

**OPTION\_2**  
**additional electrical equipment**  
 SPRING\_Induction\_Unit\_1000W  
 Round (item-number: 12303) 230 V /  
 50 Hz / 1000 Watt, (SPRING: 58 9842  
 10 24)



system suitable for  
 chafing-dish units by  
 SPRING or WMF

**MATERIAL+COLOR**

<b>base</b>	<b>option</b>
base: 100,101,102	base: 103, 104, 105, 109, 112
table-top: 401, 402	table-top: 407, 409, 411, 412, 414, 415, 416, 417, 418, 419

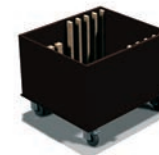
combination of STAGE\_80\_M\_CHAFING-DISH\_3  
 and STAGE\_80\_XS\_CHAFING-DISH\_1



top view



**Item No.:** 99145  
 Trolley for max. 2 x table 80\_XS\_CHAFING-DISH



weight: 50 kg [empty]/104 kg [full]

**Item No.: 50042100402**

[LxWxH]: 1800 x 500 x 840 mm  
adjustable height: 920, 1000, 1080 mm  
weight: 37,0 kg

**Base**

steel, powder-coated, color: anthracite  
profile 40 x 40 mm, on wheels,  
diameter=50 mm  
(all wheels with brake)  
weight: 16,0 kg  
base is height adjustable

**Table-Top**

compact panel, 10 mm,  
decor: ceramic anthracite  
weight: 21,0 kg

**OPTION\_1**

**additional electrical equipment**  
electric\_heating\_unit\_SPRING (item-  
number: 12301) 50-60 Hz, 230V  
(SPRING: 60 9505 80 01)

**OPTION\_2**

**additional electrical equipment**  
SPRING\_Induction\_Unit\_1000W  
Round (item-number: 12303) 230 V /  
50 Hz / 1000 Watt, (SPRING: 58 9842  
10 24)

perfect system  
to present warm food in  
integrated chafing-dish



**MATERIAL+COLOR**

**basic**

base: 100,101,102  
table-top: 401, 402

**option**

base: 103, 104, 105, 109, 112  
table-top: 407, 409, 411, 412, 414, 415, 416, 417, 418, 419

combination of STAGE\_50\_M\_CHAFING-DISH\_2  
and STAGE\_50\_XS\_CHAFING-DISH\_1 + SHELF



top view



**Item No.: 99144**

Trolley for max. 2 x table 50\_M\_CHAFING-DISH



weight: 65 kg [empty]/154 kg [full]

## STAGE\_50\_XS\_CHAFING-DISH\_1

**Item No.:** 50043100402

[LxWxH]: 800 x 500 x 760 mm  
adjustable height: 840, 920, 1000 mm  
weight: 26,0 kg

**Base**

steel, powder-coated, color: anthracite  
profile 40 x 40 mm, on wheels,  
diameter=50 mm  
(all wheels with brake)  
weight: 12,6 kg  
base is height adjustable

**Table-Top**

compact panel, 10 mm,  
decor: ceramic anthracite  
weight: 13,4 kg

**OPTION\_1**

**additional electrical equipment**  
electric\_heating\_unit\_SPRING (item-  
number: 12301) 50-60 Hz, 230V  
(SPRING: 60 9505 80 01)

**OPTION\_2**

**additional electrical equipment**  
SPRING\_Induction\_Unit\_1000W  
Round (item-number: 12303) 230 V /  
50 Hz / 1000 Watt, (SPRING: 58 9842  
10 24)

combination of STAGE\_50\_M\_CHAFING-DISH\_2  
and STAGE\_50\_XS\_CHAFING-DISH\_1



system suitable for  
chafing-dish units by  
SPRING or WMF

**MATERIAL+COLOR****basic**

base: 100,101,102  
table-top: 401, 402

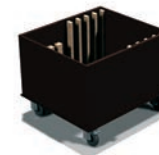
**option**

base: 103, 104, 105, 109, 112  
table-top: 407, 409, 411, 412, 414, 415, 416, 417, 418, 419

top view

**Item No.:** 99145

Trolley for max. 2 x table 50\_XS\_CHAFING-DISH



weight: 50 kg [empty]/124 kg [full]

# Coffee Station + Cupboard

storage boards in VENTA style – with lockable doors





## STAGE\_80\_COFFEE\_STATION

### Item No.: 80017101401267

[LxWxH]: 800 x 800 x 920 mm  
weight: 70,0 kg

#### Base

steel, powder-coated,  
color: champagne  
profile 40 x 40 mm, on wheels,  
diameter=75 mm  
(all wheels with brake)

#### Table-Top

compact panel, 10 mm, with one hole  
for disposal of coffee dregs  
decor: premium white



Designed for WMF  
coffee stations, but  
can be customized  
also for other brands.

#### MATERIAL+COLOR

##### basic

base: 100,101,102  
table-top: 401, 402  
cupboard: 267,268

##### option

base: 103, 104, 105, 109, 112  
table-top: 407, 409, 411, 412, 414, 415, 416, 417, 418, 419  
cupboard: 251, 252, 253, 254, 255, 256, 257, 258, 259, 260

#### Cupboard

melamine faced, chipboard 19 mm,  
one door which can be locked,  
decor: premium white

#### Power Supply

EU plug, cable length: 180 cm  
(outside)  
plugbar (EU, three sockets, inside)  
suitable for 2,75 - 3,25 kW  
220-240 V



### rectangular version

#### Item No.: 80018100402268

1200 x 800 x 920 mm  
weight: 80,0 kg



## STAGE\_80\_CUPBOARD

**Item No.:** 80043101401267

[LxWxH]: 800 x 800 x 920 mm  
weight: 70 kg

**Base**

steel, powder-coated,  
color: champagne  
profile 40 x 40 mm, on wheels,  
diameter=75 mm  
(all wheels with brake)

**Table-Top**

compact panel, 10 mm, with one hole  
for disposal of coffee dregs  
decor: premium white  
weight: 10 kg

**Cupboard**

melamine faced, chipboard 19 mm,  
one door which can be locked,  
decor: premium white



**MATERIAL+COLOR**

**basic**

base: 100,101,102  
table-top: 401, 402  
cupboard: 267,268

**option**

base: 103, 104, 105, 109, 112  
table-top: 407, 409, 411, 412, 414, 415, 416, 417, 418, 419  
cupboard: 251, 252, 253, 254, 255, 256, 257, 258, 259, 260

**Based on the model  
STAGE\_80\_XS VENTA  
created a solid cupboard  
for storage purpose.**

**The cupboard includes  
two shelves. The height of  
the shelves is adjustable.  
One large door which can  
be locked.**

**Please define the door  
stop side when you place  
an order (where the hinges  
should be fixed).**

top view  
hinge side has to be defined



LEFT – hinge side



RIGHT – hinge side

two adjustable shelves inside



fits perfectly to the complete STAGE range



# Plate Warmer

perfectly integrated in the buffet line



**Item No.: 50027**

[LxWxH]: 800 x 500 x 920 mm  
weight: 31 kg

**Base**

steel, powder-coated anthracite  
profile 40 x 40 mm, with height  
compensation, weight: 12,6 kg

**Table-top**

compact panel 10 mm,  
790 x 490 mm,  
weight: 5,6 kg

**Mounting frame**

steel, powder-coated anthracite  
profile 40 x 40 mm  
weight: 4 kg

**FRONT- and SIDEBLINDS**

compact panel: 3 mm  
decor: ceramic anthracite  
weight: 8,8 kg

**Individual**

other colors on request

**warm plates**  
in a STAGE\_50\_XS



**MATERIAL+COLOR**

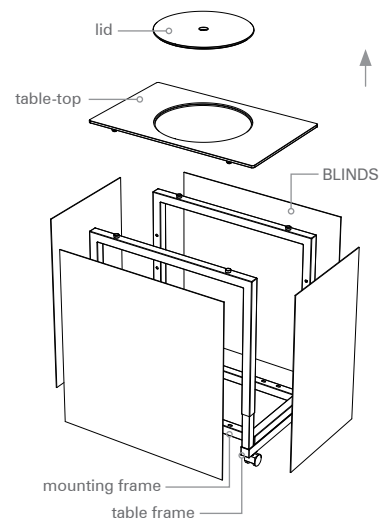
**basic**

base: 100,101,102  
table-top: 401, 402

**option**

base: 103, 104, 105, 109, 112  
table-top: 407, 409, 411, 412, 414, 415, 416, 417, 418, 419

explosion view/delivery contents



separate item/not included

Item No.: 11039



RIEBER plater warmer (model: RRV-H1)

**Item No.: 50028**

[LxWxH]: 800 x 500 x 920 mm  
weight: 22,2 kg

**Base**

steel, powder-coated anthracite  
profile 40 x 40 mm, with height  
compensation, weight: 12,6 kg

**Table-top + Lid**

compact panel 10 mm,  
790 x 490 mm,  
weight: 5,6 kg

**Mounting frame**

steel, powder-coated anthracite  
profile 40 x 40 mm  
weight: 4 kg

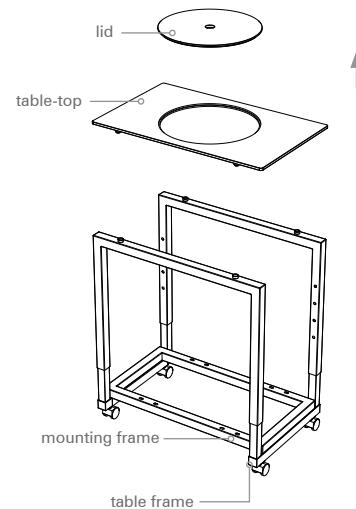
**Individual**

other colors on request

**KIT without panels  
you have to add them  
with your order**



explosion view/delivery contents



separate item/not included  
Item No.: 11039



RIEBER plater warmer (model: RRV-H1)

**MATERIAL+ COLOR**

**basic**

base: 100, 101, 102  
table-top: 401, 402

**option**

base: 103, 104, 105, 109, 112  
table-top: 407, 409, 411, 412, 414, 415, 416, 417, 418, 419





## STAGE\_50\_XS\_SERVICE-CART

**Item No.: 50041**

[LxWxH]: 800 x 500 x 920 mm  
 (height for additional, available blinds)  
 adjustable height: 760, 840, 1000 mm  
 weight: 34,5 kg (total weight)

**Base**

steel, powder-coated, color: anthracite  
 profile 40 x 40 mm, on wheels,  
 diameter = 50 mm (all wheels with  
 brake) weight: 12,6 kg

**Table-Top**

glass-top, 10 mm (9,5 kg) or compact  
 panel, 10 mm (5,6 kg)

**Shelf**

shelf (middle): SHELF\_STAGE\_50\_XS  
 (Item No.: 50007), material: 2 x  
 U-bolt: steel, powder-coated, shelf:  
 compact plate, 10 mm  
 weight: 7,5 kg

**Shelf\_Low**

(Item No.: 50026), material:  
 compact panel, 10 mm, description:  
 lower shelf for the buffet-table  
 STAGE\_50\_XS, usage: This shelf can  
 be used as a second shelf in addition  
 to the standard shelf, as it is placed  
 directly at the metal frame near the  
 ground, weight: 5,0 kg

**Additional Equipment**

(please order separately)  
 blinds in metal with decor cut-outs  
 (BAMBOO or LEAF design) or in  
 compact panel (thickness of 3mm),  
 decor: e.g. ceramic anthracite and  
 many more options

**MATERIAL+COLOR****basic**

base: 100,101,102  
 table-top: 401, 402

**option**

base: 103, 104, 105, 109, 112  
 table-top: 407, 409, 411, 412, 414, 415, 416, 417, 418, 419

The small buffet table  
 STAGE\_50\_XS and two  
 additional shelves result in  
 a new product: the VENTA  
 SERVICE-CART.

This very useful table offers  
 a wide range of applica-  
 tions:

as a small ordering table for  
 serving, as a small tea trol-  
 ley for meetings or simply  
 equipped with a blind as  
 practical storage space.

# Mobile Bar

modular – rollable – flexible



Neue Nationalgalerie, Berlin/GERMANY

Mobile Bar system and stools



## **The Mobile Bar – a design experience, with an exclusive, modern design, flexibility and versatility.**

The established STAGE buffet system from our VENTA Interior range can be converted into a mobile bar. In place of the glass panels, already part of all versions, we have added an additional table-top option to our portfolio. The compact panel is a heavy-duty plastic surface. We use this panel both as a table-top and as a covering, which enables a mobile bar to be created from a STAGE buffet table in an instant. A front panel is attached to the existing metal adapters on the long side. The two side coverings are also attached to the front panels using special connectors without the need for tools. Then the table-top, which is also formed from the compact panel, is attached to the adapter. Attach the table-top, and the mobile bar is complete!

To make it perfect, you only need one more item of STAGE buffet system furniture. With the STAGE\_50\_L buffet table as a counter, the mobile bar is ready for use. The STAGE\_50\_L table-top can consist of a glass panel (particularly appropriate in color form) or a compact panel. There is virtually no limit to the possible combinations. The mobile bar can match the color theme of the room or the event theme.

We offer two standard versions of the mobile bar – the corresponding table frames in standard anthracite and champagne colors and the table panels and coverings in anthracite (ceramic anthracite) and white (premium white).

## STAGE\_MOBILE\_BAR

### Item No.: 85001100402402

T\_1 [LxWxH]: 1960 x 500 x 1000 mm

T\_2 [LxWxH]: 1800 x 800 x 920 mm

total weight: 103,5 kg

### Base

steel, powder-coated anthracite  
profile 40 x 40 mm, on wheels with  
height compensation,

Table\_1/weight: 25 kg,

Table\_2/weight: 23 kg

### Table-top/Side-plates

compact-plate, 10 mm

decor: ceramic anthracite or

premium white

Table\_1/weight: 15 kg

Table\_2/weight: 53 kg

## bar-system

applicable with all  
STAGE-tables

(see page 26)

table-top size:  
1950 x 490 mm  
material options:  
compact panel  
or glass top

connection between table-top and base

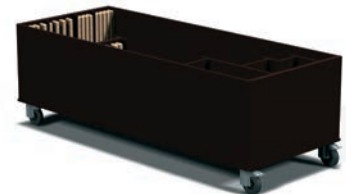


front and side covers on Table\_2



### Item No.: 99124

Trolley for 2 x Mobile Bar



weight: 70 kg [empty]/277 kg [full]



### MATERIAL+COLOR

#### basic

base: 100,101,102

table-top: 401, 402

cover: 401, 402

#### option

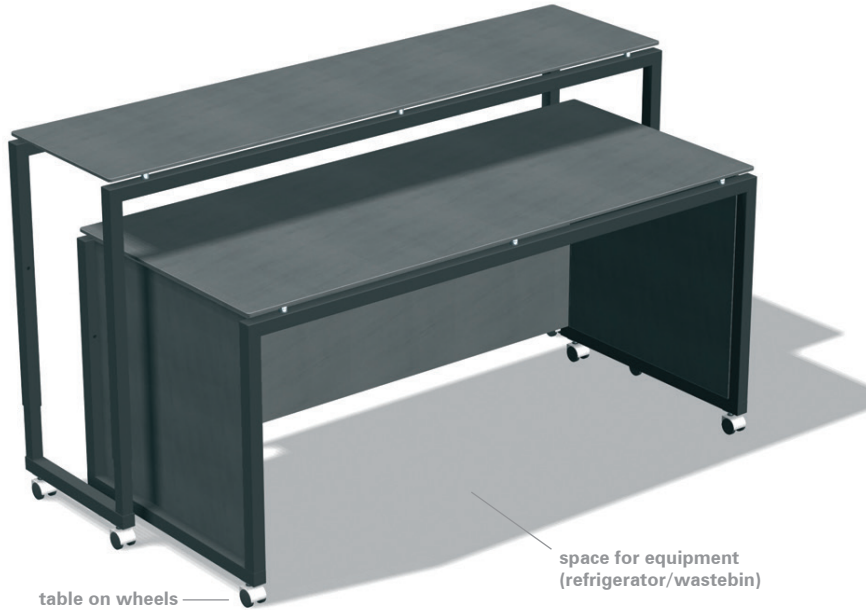
base: 103, 104, 105, 109, 112

table-top: 303, 305, 307, 319, 407, 409, 411, 412, 414, 415, 416, 417, 418, 419

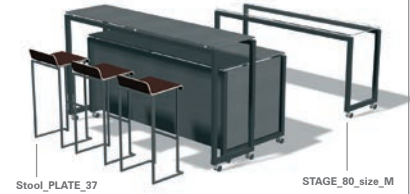
cover: 407, 409, 411, 412, 414, 415, 416, 417, 418, 419

# Benefits

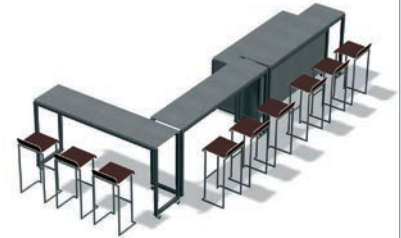
**perfect system**  
to build up a new  
application in a few seconds ...



optional equipment/arrangement

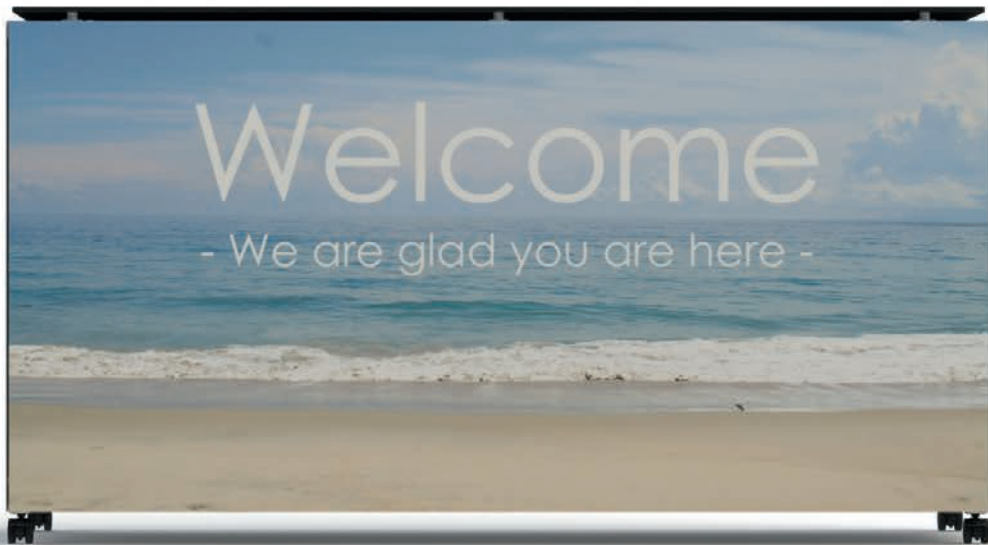


optional equipment/arrangement



optional equipment/arrangement







## STAGE\_50\_L\_HOSPI\_DESK

**Item No. : 50030101402401**

[LxWxH]: 1960 x 500 x 1080 mm  
weight: 43,8 kg

**Base**

steel, powder-coated,  
color: champagne  
profile 40 x 40 mm, on wheels,  
diameter = 50 mm  
(all wheels with brake)  
weight: 18 kg

**Table-Top**

compact panel, 10 mm,  
decor: ceramic anthracite  
weight: 15 kg

**Blinds**

compact panel, 10 mm,  
decor: ceramic anthracite

**Optional Equipment**

SHELF\_42/SHELF\_LOW (not included)



OPTIONAL: SHELF\_42



backside view



OPTIONAL: SHELF\_LOW



# Magnetic Blinds

change your table into a covered one



## FRONT/SIDEBLIND\_STAGE\_BAMBOO

### FRONTBLIND\_STAGE\_L\_BAMBOO

Item No.: 38029

[LxWxH]: 1960 x 822 x 17 mm

weight: 13 kg

### FRONTBLIND\_STAGE\_M\_BAMBOO

Item No.: 38030

[LxWxH]: 1800 x 822 x 17 mm

weight: 12 kg

### FRONTBLIND\_STAGE\_XS\_BAMBOO

Item No.: 38033

[LxWxH]: 800 x 822 x 17 mm

weight: 6 kg

special table/size = 2 x XS

### FRONTBLIND\_STAGE\_S\_BAMBOO

Item No.: 38032

[LxWxH]: 1600 x 822 x 17 mm

weight: 7,5 kg

### SIDEBLIND\_STAGE\_80\_BAMBOO

Item No.: 38034

[LxWxH]: 800 x 822 x 17 mm

weight: 6 kg

### SIDEBLIND\_STAGE\_50\_BAMBOO

Item No.: 38035

[LxWxH]: 500 x 822 x 17 mm

weight: 4,5 kg

SIDEBLINDS/available in  
two sizes for 50 and 80 system



#### material

2 mm, steel, laser cut, powder-coated

decoration and cover element for STAGE tables  
FRONT suitable for 50 and 80 system/table height = 92 cm

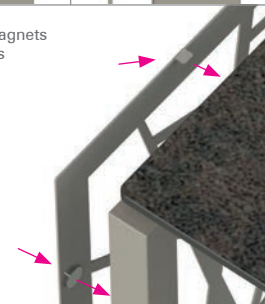
side view 1



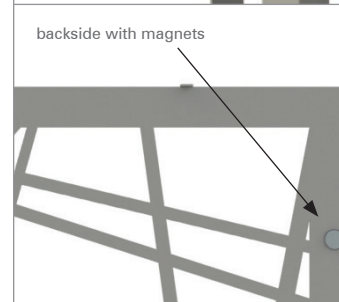
side view 2



mounting by magnets  
and small hooks



backside with magnets



## FRONT/SIDEBLIND\_STAGE\_BAMBOO\_COVERED

### FRONTBLIND\_STAGE\_L\_BAMBOO\_C.

Item No.: 38036

[LxWxH]: 1960 x 822 x 17 mm

weight: 14 kg

### FRONTBLIND\_STAGE\_M\_BAMBOO\_C.

Item No.: 38037

[LxWxH]: 1800 x 822 x 17 mm

weight: 13 kg

### FRONTBLIND\_STAGE\_XS\_BAMBOO\_C.

Item No.: 38040

[LxWxH]: 800 x 822 x 17 mm

weight: 6,5 kg

special table/size = 2 x XS

### FRONTBLIND\_STAGE\_S\_BAMBOO\_C.

Item No.: 38039

[LxWxH]: 1600 x 822 x 17 mm

weight: 8 kg

### SIDEBLIND\_STAGE\_80\_BAMBOO\_C.

Item No.: 38041

[LxWxH]: 800 x 822 x 17 mm

weight: 6,5 kg

### SIDEBLIND\_STAGE\_50\_BAMBOO\_C.

Item No.: 38042

[LxWxH]: 500 x 822 x 17 mm

weight: 5 kg

SIDEBLINDS/available in  
two sizes for 50 and 80 system

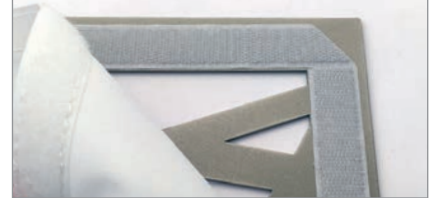


#### material

2 mm, steel, laser cut, powder-coated  
and additional cover with polyester

decoration and cover element for STAGE tables  
FRONT suitable for 50 and 80 system/table height = 92 cm

backside with polyester  
(white, translucent, removable)



backside with polyester (block-out)  
decor print: ceramic anthracite (622)



backside with magnets



## FRONT/SIDEBLIND\_STAGE\_LEAF

### FRONTBLIND\_STAGE\_L\_LEAF

Item No.: 38015

[LxWxH]: 1960 x 822 x 17 mm

weight: 13 kg

### FRONTBLIND\_STAGE\_M\_LEAF

Item No.: 38016

[LxWxH]: 1800 x 822 x 17 mm

weight: 12 kg

### FRONTBLIND\_STAGE\_XS\_LEAF

Item No.: 38019

[LxWxH]: 800 x 822 x 17 mm

weight: 6 kg

special table/size = 2 x XS

### FRONTBLIND\_STAGE\_S\_LEAF

Item No.: 38018

[LxWxH]: 1600 x 822 x 17 mm

weight: 7,5 kg

### SIDEBLIND\_STAGE\_80\_LEAF

Item No.: 38020

[LxWxH]: 800 x 822 x 17 mm

weight: 6 kg

### SIDEBLIND\_STAGE\_50\_LEAF

Item No.: 38021

[LxWxH]: 500 x 822 x 17 mm

weight: 4,5 kg

**SIDEBLINDS/available in  
two sizes for 50 and 80 system**



#### material

2 mm, steel, laser cut, powder-coated

**decoration and cover element for STAGE tables**

**FRONT suitable for 50 and 80 system/table height = 92 cm**

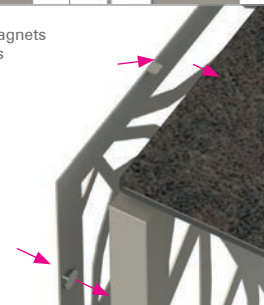
side view 1



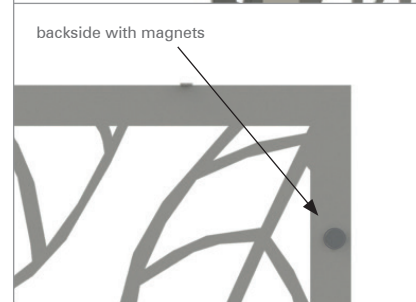
side view 2



mounting by magnets  
and small hooks



backside with magnets



## FRONT/SIDEBLIND\_STAGE\_LEAF\_COVERED

### FRONTBLIND\_STAGE\_L\_LEAF\_C.

Item No.: 38022

[LxWxH]: 1960 x 822 x 17 mm

weight: 14 kg

### FRONTBLIND\_STAGE\_M\_LEAF\_C.

Item No.: 38023

[LxWxH]: 1800 x 822 x 17 mm

weight: 13 kg

### FRONTBLIND\_STAGE\_XS\_LEAF\_C.

Item No.: 38026

[LxWxH]: 800 x 822 x 17 mm

weight: 6,5 kg

special table/size = 2 x XS

### FRONTBLIND\_STAGE\_S\_LEAF\_C.

Item No.: 38025

[LxWxH]: 1600 x 822 x 17 mm

weight: 8 kg

### SIDEBLIND\_STAGE\_80\_LEAF\_C.

Item No.: 38027

[LxWxH]: 800 x 822 x 17 mm

weight: 6,5 kg

### SIDEBLIND\_STAGE\_50\_LEAF\_C.

Item No.: 38028

[LxWxH]: 500 x 822 x 17 mm

weight: 5 kg

SIDEBLINDS/available in  
two sizes for 50 and 80 system



#### material

2 mm, steel, laser cut, powder-coated  
and additional cover with polyester

decoration and cover element for STAGE tables  
FRONT suitable for 50 and 80 system/table height = 92 cm

backside with polyester  
(white, translucent, removable)



backside with polyester (block-out)  
decor print: ceramic anthracite (622)



backside with magnets



## FRONT/SIDEBLIND (3 mm, compact panel)

### FRONTBLIND\_STAGE\_L

Item No.: 38043

[LxWxH]: 1960 x 822 x 17 mm

weight: 6,5 kg

### FRONTBLIND\_STAGE\_M

Item No.: 38044

[LxWxH]: 1800 x 822 x 17 mm

weight: 6,0 kg

### FRONTBLIND\_STAGE\_XS

Item No.: 38047

[LxWxH]: 800 x 822 x 17 mm

weight: 2,7 kg

special table/size = 2 x XS

### FRONTBLIND\_STAGE\_S

Item No.: 38046

[LxWxH]: 1600 x 822 x 17 mm

weight: 5,3 kg

### SIDEBLIND\_STAGE\_80

Item No.: 38048

[LxWxH]: 800 x 822 x 17 mm

weight: 2,7 kg

### SIDEBLIND\_STAGE\_50

Item No.: 38049

[LxWxH]: 500 x 822 x 17 mm

weight: 1,7 kg

**suitable for all STAGE tables-  
buffet height: 92 cm**



### MATERIAL+COLOR

#### basic

metal parts: 100,101,102  
cover: 401, 402

#### option

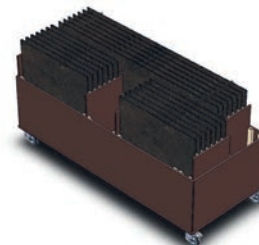
metal parts: 103, 104, 105, 109, 112  
cover: 407, 409, 411, 412, 414, 415, 416, 417, 418, 419

side view 1

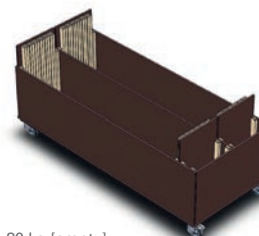
side view 2



trolley with BLINDS



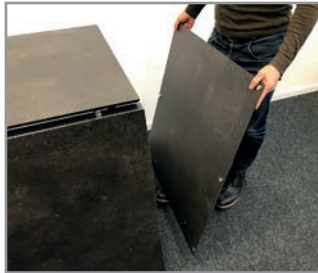
Item No.: 99146



weight: 80 kg [empty]



EASY + FAST / Magnetic System for FRONT- and SIDEBLINDS



# Heatbridge + Sneezeguard

useful items to complete your tables



# HEATBRIDGE\_BARTSCHER

**Item No.: 66004100**

[LxWxH]: 1845 x 360 x 445 mm  
weight: 8,2 kg

**Base (feet)**

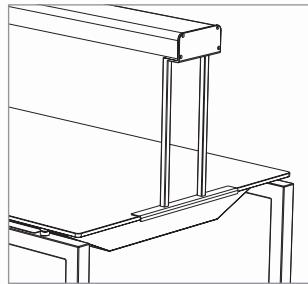
steel, powder-coated anthracite  
profile 15 x 15 mm

**Heating element (infrared technic)**

Bartscher (manufacturer)  
model: 114.006  
power: 1,73 kW / 230V  
color/material: silver, satinated  
aluminium

**Individual**

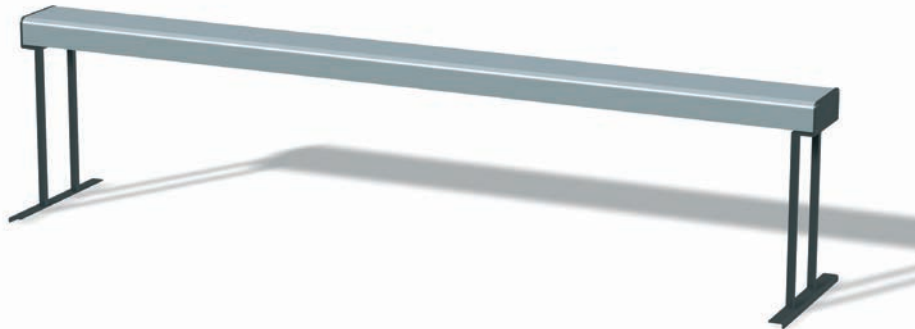
different colors available  
(only for the base)



front view



side view



**additional item to keep the food warm  
(in combination with the induction table)**

underside view:

infrared heat technic

**MATERIAL+COLOR**

**basic**  
base: 100,101,102

**option**  
base: 103, 104, 105, 109, 112



combination with STAGE table

# HEATBRIDGE\_BEER

**Item No.:** 66002100

[LxWxH]: 1788 x 425 x 400 mm  
weight: 20 kg

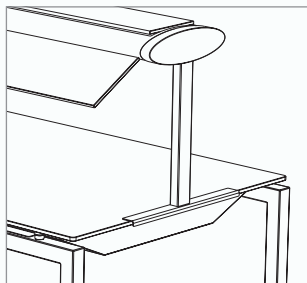
**Base (feet)**

steel, powder-coated anthracite  
profile 50 x 25 mm

**Heating element (infrared technic)**

Beer (manufacturer)  
model: SOLARIS  
power: 5 x 300 W / 230V  
color/material: steel, powder-coated anthracite

**Individual**  
different colors available

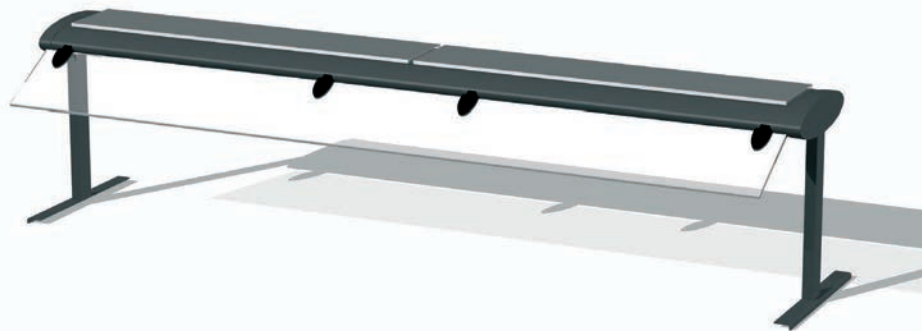


special feet – perfect connection to the table

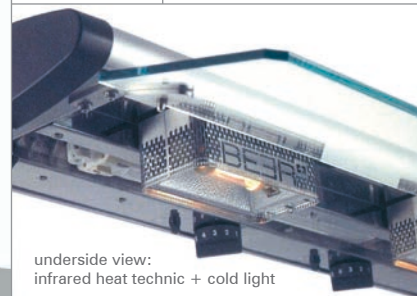
front view



side view



additional item to keep the food warm  
(in combination with the induction table)



underside view:  
infrared heat technic + cold light

**MATERIAL+COLOR**

**basic**

base: 100,101,102

**option**

base: 103, 104, 105, 109, 112



combination with STAGE table

## STAGE\_ETAGERE (set of 4)

**Item No.:** 32001100300

L: 750 x 400 x 280 mm

M: 700 x 360 x 255 mm

XS: 320 x 320 x 230 mm (two pieces)

total weight: 18,5 kg

**Base**

steel, powder-coated anthracite

profile 15 x 15 mm,

weight: 1,4 kg/1,3 kg/2 x 0,6 kg

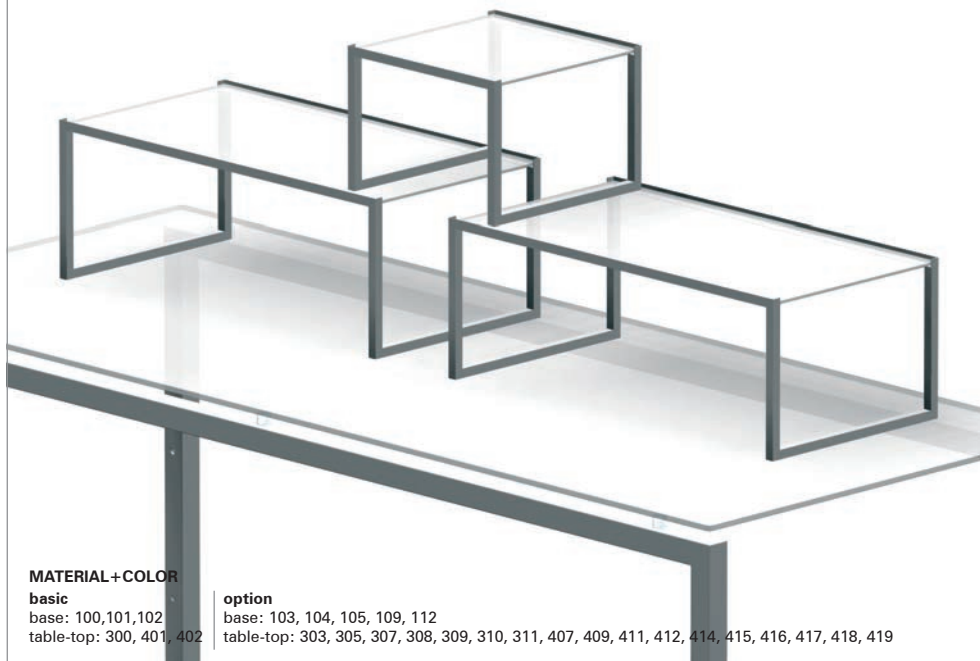
**Table-top**

safety glass 6 mm,

weight: 4,4 kg/3,7 kg/2 x 1,5 kg

**Individual**

other colors on request

**MATERIAL+COLOR****basic**

base: 100,101,102

table-top: 300, 401, 402

**option**

base: 103, 104, 105, 109, 112

table-top: 303, 305, 307, 308, 309, 310, 311, 407, 409, 411, 412, 414, 415, 416, 417, 418, 419

front view



side view



top view



set of four pieces



stackable for storage





Radicchio

Prosciutto Cotto

Radicchio

**Item No.:** 32005100303

[LxWxH]: 400 x 400 x 150 mm  
weight: 7 kg

**Base**

steel, powder-coated anthracite  
profile 15 x 15 mm  
weight: 7 kg

**Table-Top**

safety glass 6 mm, white glass,  
underside white colored,  
weight: 2,2 kg

**Bowl (for COOL-plates)**

steel, 1 mm, bended, powder-coated  
weight: 1,5 kg

**COOL-Plate**

350 x 350 x 25 mm  
polystyrol, black  
weight: 2,4 kg

**Individual**

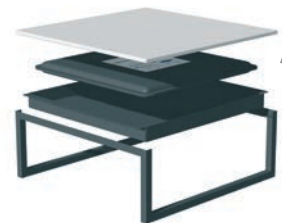
other colors on request

**2h cooling**  
**5°-10°C**  
on the glass surface  
without electricity

COOL-plate  
350 x 350 x 25 mm  
weight: 2,4 kg



explosion view/main parts



rectangular model

Item No.: 32006

850 x 420 x 200 mm/weight: 14 kg



**MATERIAL+COLOR**

**basic**

base: 100,101,102  
table-top: 303, 307

**option**

base: 103, 104, 105, 109, 112  
table-top: 308, 309, 310, 311





# FRAME\_180

## Item No.: 25002100300

[LxWxH]: 1800 x 700 x 900 mm  
weight: 54 kg

### Base

steel, powder-coated anthracite  
profile 30 x 30 mm, can be folded  
weight: 18 kg

### Table-top

safety glass 6 mm framed,  
profile 30 x 30 mm  
weight: 36 kg

## Height options

750 mm/1050 mm

### Individual

other colors on request

## Square Version

Item No.: 25011100300

FRAME\_70

700 x 700 x 900 mm



## MATERIAL+COLOR

### basic

base: 100,101,102  
table-top: 300, 401, 402

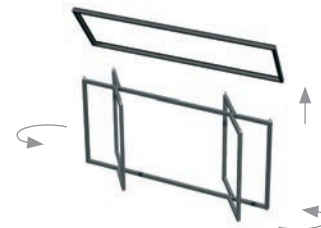
### option

base: 103, 104, 105, 109, 112  
table-top: 303, 305, 307, 308, 309, 310, 311, 407, 409, 411, 412, 414, 415, 416, 417, 418, 419

connection between table-top and base



folding-system



Item No.: 99138

Trolley for 5 x FRAME\_180\_steel



weight: 60 kg [empty]/330 kg [full]

# SCAPE\_180

**Item No. : 24002100300**  
[LxWxH]: 1800 x 700 x 900 mm  
weight: 51 kg

**Base**  
steel, powder-coated anthracite  
profile 30 x 30 mm, can be folded  
weight: 16 kg

**Table-top**  
safety glass 10 mm, rounded angle,  
to be fixed to the base,  
weight: 35 kg

**Height options**  
750 mm/1050 mm

**Individual**  
other colors on request

**Square version**  
**Item No. : 24011100300**

SCAPE\_70  
700 x 700 x 900 mm

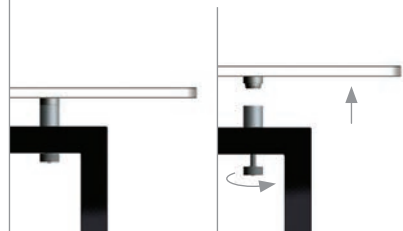


## MATERIAL+COLOR

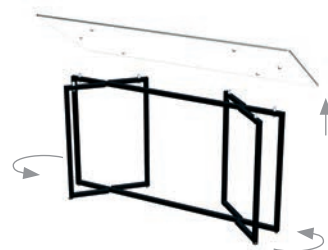
**basic**  
base: 100,101,102  
table-top: 300, 401, 402

**option**  
base: 103, 104, 105, 109, 112  
table-top: 303, 305, 307, 308, 309, 310, 311, 407, 409, 411, 412, 414, 415, 416, 417, 418, 419

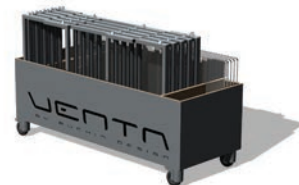
connection between table-top and base



folding-system



**Item No. : 99136**  
Trolley for 5 x SCAPE\_180



weight: 62 kg [empty]/317 kg [full]

# SHELF\_FRAME\_180

**Item No.:** 25040100402

[LxWxH]: 1136 x 700 x 371 mm  
weight: 18 kg

**Base**

steel, 3 mm, bended, powder-coated  
anthracite

**Shelf**

compact plate 10 mm,  
decor: ceramic anthracite

**Special features**

any other decor is available

**Individual**

other colors on request for U-Bolt

**MATERIAL+COLOR****basic**

base: 100,101,102  
shelf: 401, 402

**option**

base: 103, 104, 105, 109, 112  
shelf: 407, 409, 411, 412, 414, 415, 416, 417, 418, 419

front view



side view



explosion view



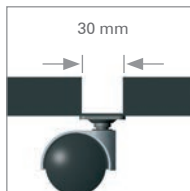
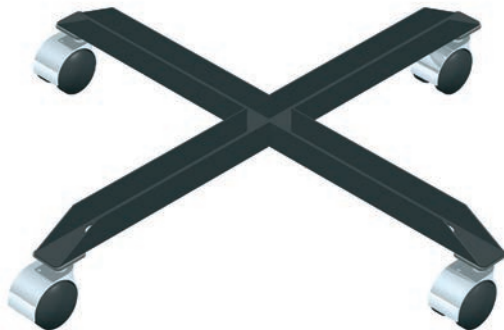
FRAME\_180 with SHELF



## ROLLERSKATE

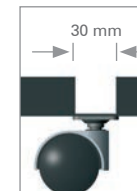
**Rollerskates**  
for **STEEL tables\_SET/BY/SCAPE**  
Item No.: 66007100  
(all tables with two foldable legs)

profile: 30 x 30 mm  
[LxWxH]: 600 x 600 x 98 mm  
weight: 2,4 kg  
color: powder-coated anthracite



**Rollerskates**  
for **STEEL tables\_FRAME\_180**  
Item No.: 66005100  
(table with four foldable legs)

profile: 30 x 30 mm  
[LxWxH]: 600 x 320 x 98 mm  
weight: 2,0 kg  
color: powder-coated anthracite



**Rollerskates**  
for **STEEL table\_SCAPE\_180**  
Item No.: 66006100  
(table with four foldable legs)

profile: 30 x 30 mm  
[LxWxH]: 600 x 320 x 98 mm  
weight: 2,0 kg  
color: powder-coated anthracite

## LEVEL\_150 (set of 3 items)

**Item No.:** 26001100300

### LEVEL\_150

[LxWxH]: 1500 x 750 x 850 mm  
weight: 34 kg

#### Base

steel, powder-coated anthracite  
profile 30 x 30 mm, can be folded  
weight: 12 kg

#### Table-top

safety glass 10 mm,  
to be fixed to the base,  
weight: 22 kg

### LEVEL\_ETAGERE\_100

[LxWxH]: 1000 x 500 x 260 mm  
weight: 11,1 kg

#### Feet

stainless steel, matt abraded  
weight: 3 x 0,7 kg

#### Table-top

safety glass 10 mm,  
bolted with the feet,  
weight: 9 kg

### LEVEL\_ETAGERE\_60

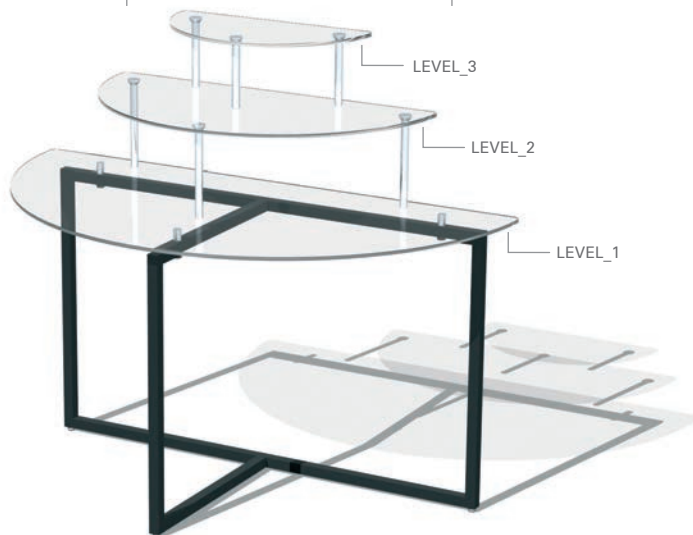
[LxWxH]: 600 x 300 x 200 mm  
weight: 5,5 kg

#### Feet

stainless steel, matt abraded  
weight: 3 x 0,5 kg

#### Table-top

safety glass 10 mm,  
bolted with the feet,  
weight: 4 kg



#### MATERIAL+COLOR

##### basic

base: 100,101,102  
table-top: 300, 401, 402

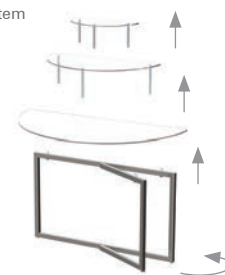
##### option

base: 103, 104, 105, 109, 112  
table-top: 303, 305, 307, 308, 309, 310, 311, 407, 409, 411, 412, 414, 415, 416, 417, 418, 419

connection between table-top and feet



folding-system



**Item No.:** 99134

Trolley for 4 x LEVEL\_150



weight: 67 kg [empty]/271 kg [full]

## QUAD\_230 (set of 2 items)

**Item No.:** 28001100300

### QUAD\_230

[LxWxH]: 1600 x 700 x 900 mm  
weight: 32 kg

#### Base

steel, powder-coated anthracite  
profile 30 x 30 mm, not foldable  
weight: 10 kg

#### Table-top

safety glass 10 mm,  
to be fixed to the base,  
weight: 22 kg

### QUAD\_ETAGERE\_160

[LxWxH]: 1100 x 350 x 260 mm  
weight: 11,3 kg

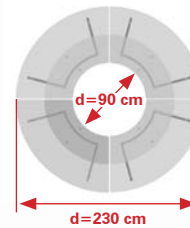
#### 4 x Feet

stainless steel, matt abraded  
weight: 4 x 0,7 kg = 2,8 kg

#### Table-top

safety glass 10 mm,  
bolted with the feet,  
weight: 8,5 kg

Top View



90°



The „ALL-ROUNDER“  
placed in a circle, around a  
column or in combination  
with the SCAPE model.

#### MATERIAL+COLOR

##### basic

base: 100,101,102

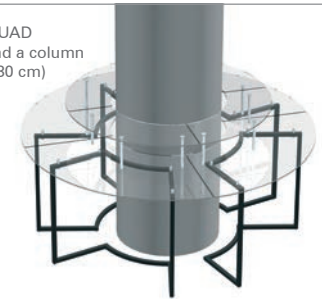
table-top: 300, 401, 402

##### option

base: 103, 104, 105, 109, 112

table-top: 303, 305, 307, 308, 309, 310, 311, 407, 409, 411, 412, 414, 415, 416, 417, 418, 419

4 x QUAD  
around a column  
( $\phi=230$  cm)



compilation of  
4 x QUAD and  
4 x SCAPE



**Item No.:** 99135

Trolley for 4 x QUAD



weight: 67 kg [empty]/240 kg [full]

# Table + Stool

suitable for every event







## Cocktail tables

**Our exclusively designed cocktail tables can be folded up and can be assembled and disassembled in just a few easy steps, without the need for any tools.**

A trolley system enables the furniture to be transported and stored in the smallest spaces. All of our furniture is mobile, can be folded up and can be used anywhere.

Maximum flexibility. Our Cocktail table – always the focal point with its stylish design.

Our Cocktail table is perfectly designed down to the smallest detail. It has a unique combination of design and functionality. The tables are simply elegantly designed. It comes as a surprise to many that this is a folding table, which can be stored in the smallest spaces.



BASIC:  
base frame: 100, 101, 102



OPTION:  
base frame: 103, 104, 105, 109

Item No.: 23001100300300



SET\_70/material + colors



# SET\_70

**Item No.: 23001100300300**

[LxWxH]: 700 x 700 x 1050 mm  
weight: 18,5 kg

**Base**

steel, powder-coated anthracite  
profile 30 x 30 mm, can be folded  
weight: 7 kg

**Table-top**

safety glass 10 mm,  $\phi = 700$  mm,  
to be fixed to the base,  
weight: 10 kg

**Lower-tray**

safety glass 4 mm,  $\phi = 425$  mm,  
weight: 1,5 kg

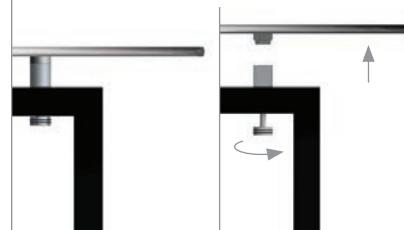
**MATERIAL+COLOR****basic**

base: 100,101,102  
table-top/lower-tray:  
300, 401, 402

**option**

base: 103, 104, 105, 109, 112  
table-top/lower-tray: 303, 305, 307, 308, 309, 310, 311,  
407, 409, 411, 412, 414, 415, 416, 417, 418, 419

connection between table-top and base



folding-system

**Item No.: 99101**

Trolley for 10 x cocktail-table\_SET\_70



weight: 35 kg [empty]/220 kg [full]

## SET\_65

### Item No.: 23004100300300

[LxWxH]: 650 x 650 x 1050 mm  
weight: 18,6 kg

#### Base

steel, powder-coated anthracite  
profile 30 x 30 mm, can be folded  
weight: 7 kg

#### Table-top

safety glass 10 mm, 650 x 650 mm,  
to be fixed to the base,  
weight: 10 kg

#### Lower-tray

safety glass 4 mm, 425 x 425 mm,  
weight: 1,6 kg



#### MATERIAL+COLOR

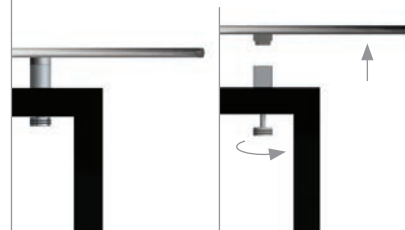
##### basic

base: 100,101,102  
table-top/lower-tray:  
300, 401, 402

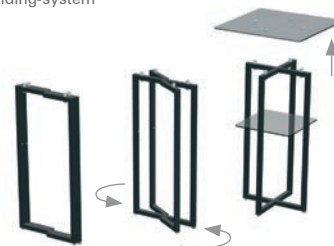
##### option

base: 103, 104, 105, 109, 112  
table-top/lower-tray: 303, 305, 307, 308, 309, 310, 311,  
407, 409, 411, 412, 414, 415, 416, 417, 418, 419

connection between table-top and base

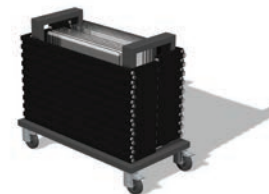


folding-system



### Item No.: 99103

Trolley for 10 x cocktail-table\_SET\_65



weight: 35 kg [empty]/221 kg [full]

# LED Frame

illuminate your cocktail table





# SET\_70\_LED

## Item No.: 23007100303

[LxWxH]: 700 x 700 x 1050 mm  
weight: 20 kg

### Base

steel, powder-coated anthracite  
profile 30 x 30 mm, can be folded  
weight: 7 kg

### Table-top

safety glass 10 mm,  $\phi = 700$  mm,  
white glass-top  
to be fixed to the base,  
weight: 10 kg

### LED frame

steel, 1 mm, powder-coated  
anthracite, white acrylic glass,  
weight: 1,5 kg

### Individual

other frame colors on request

illuminate your  
table in any color

### remote control

to adjust the LED color



### MATERIAL+COLOR

#### basic

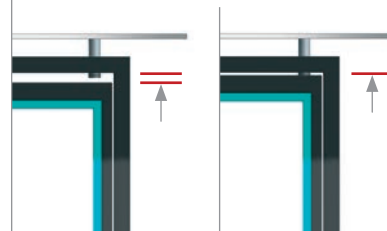
base: 100,101,102  
table-top: 300, 401, 402

#### option

base: 103, 104, 105, 109, 112  
table-top: 303, 305, 307, 308, 309, 310, 311, 407, 409, 411, 412, 414, 415, 416, 417, 418, 419



connection between table base and LED-frame



mounting of the LED-frame



folding-system of the SET Table



## LED\_FRAME\_SET

### 66001100

[LxWxH]: 940 x 425 x 30 mm  
weight: 5,5 kg

#### Base

steel, 1 mm, powder-coated  
anthracite

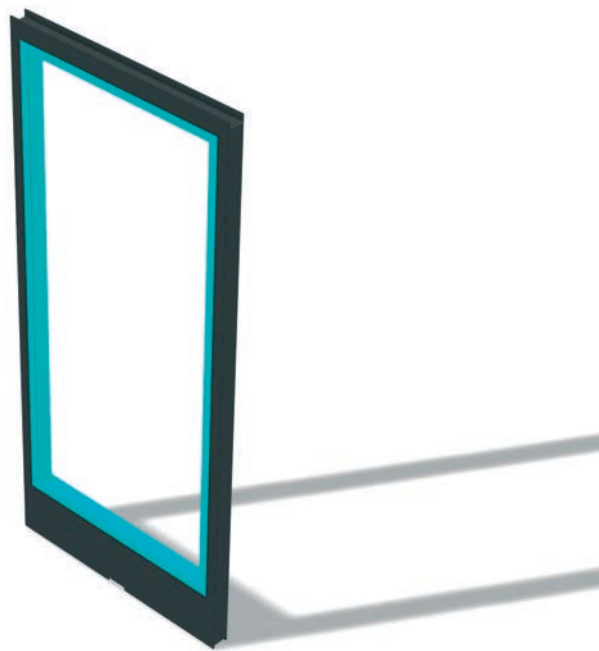
#### Lightframe

white acrylic glass,  
30 x 15 mm

#### Electrical parts

input 100-240V, 50/60Hz,  
working voltage 12-24V

additional LED frame  
to upgrade your  
cocktail table

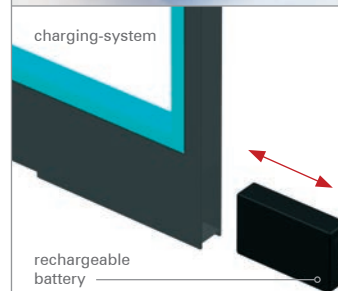


5 hours of  
light capacity

remote control  
to adjust the LED color



charging-system



rechargeable  
battery

Item No.: 99105  
Trolley for 10 x LED frame



weight: 40 kg [empty] / 55 kg [full]

# CUBE\_66

**Item No.:** 31002100601

[LxWxH]: 565 x 665 x 800 mm  
weight: 8 kg

**Base**

steel, powder-coated anthracite  
profile 15 x 15 mm, can be stacked  
weight: 4 kg

**Seat**

artificial leather, black  
weight: 1,0 kg

**Individual**

other colors on request

**MATERIAL+COLOR**

**basic**  
base: 100,101,102  
seat: 600, 601

**option**  
base: 103, 104, 105, 109, 112  
seat: 604

side view



front view



arrangement of 3 x chair



stackable



## PLATE\_37

**Item No.:** 31001100280

[LxWxH]: 390 x 410 x 865 mm  
seat-height: 765 mm  
weight: 4,5 kg

**Base**

steel, powder-coated anthracite  
profile 15 x 15 mm  
weight: 3,5 kg

**Seat**

plywood 10 mm, bent, black  
weight: 1,0 kg

**Individual**

other colors on request

**MATERIAL+COLOR****basic**

base: 100,101,102  
seat: 279, 280

**option**

base: 103, 104, 105, 109, 112  
seat: 281

## side view



## back view



## arrangement (3 x Stool\_PLATE\_37\_WHITE)

**Item No.:** 99133

Trolley for 10 x Stool\_PLATE\_37



weight: 16 kg [empty]/61 kg [full]

BY\_70

**Item No.: 27001100300**

[LxWxH]: 700 x 700 x 630 mm  
weight: 16 kg

**Base**

steel, powder-coated anthracite  
profile 30 x 30 mm, can be folded,  
frame-measures: 490 x 490 x 580 mm  
weight: 6 kg

**Table-top**

safety glass 10 mm,  $\phi = 700$  mm,  
to be fixed to the base,  
weight: 10 kg

**Individual**

other colors on request



**MATERIAL+COLOR**

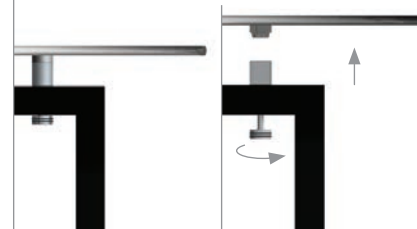
**basic**

base: 100,101,102  
table-top: 300, 401, 402

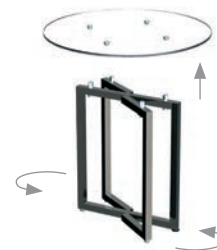
**option**

base: 103, 104, 105, 109, 112  
table-top: 303, 305, 307, 308, 309, 310, 311, 407, 409, 411, 412, 414, 415, 416, 417, 418, 419

connection between table-top and base



folding-system



**Item No.: 99140**

Trolley for 5 x side-table\_BY\_70



weight: 40 kg [empty]/120 kg [full]

BY\_45

**Item No.:** 27004100300

[LxWxH]: 450 x 450 x 610 mm  
weight: 10 kg

**Base**

steel, powder-coated anthracite  
profile 30 x 30 mm, can be folded,  
frame-measures: 430 x 430 x 560 mm  
weight: 5 kg

**Table-top**

safety glass 10 mm, 450 x 450 mm,  
to be fixed to the base,  
weight: 5 kg

**Individual**

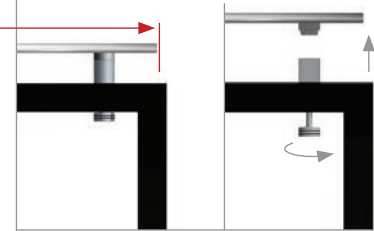
other colors on request



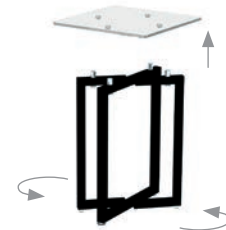
**Special FEATURE**

Table-top as small  
as the width of the  
metal frame to fit  
in the trolley.  
(inside of the frame)

connection between table-top and base

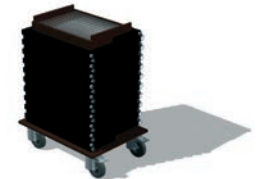


folding-system



**Item No.:** 99142

Trolley for 10 x side-table\_BY\_45



weight: 20 kg [empty]/120 kg [full]

**MATERIAL+COLOR**

**basic**

base: 100,101,102

table-top: 300, 401, 402

**option**

base: 103, 104, 105, 109, 112

table-top: 303, 305, 307, 308, 309, 310, 311, 407, 409, 411, 412, 414, 415, 416, 417, 418, 419

# LECTERN

exchangeable front display or LCD monitor





# LECTERN\_3G

**Item No.: 35001**

[LxWxH]: 500 x 600 x 1200 mm  
weight: 30 kg

**Body**

acrylic glass, color: anthracite

**Front-Board**

acrylic glass, transparent,  
600 x 1090 mm

**Base**

metal plate, 2 mm,  
color: anthracite, powder-coated

delivery version:  
black front cover  
(exchangeable)

**Features:**

- exchangeable front for printings
- LED reading lamp
- preparation for microphone
- soft cover for transport and storage
- rollerskate

all electrical properties use standard  
power supply of 230V/50Hz  
plug: schuko (CEE 7/4)



front view



height: 120 cm



cable inlet under  
the metal plate

# LECTERN\_3GS\_MONITOR

**Item No. : 35003**

[LxWxH]: 550 x 860 x 1200 mm  
weight: 53,7 kg

**Body**

acrylic glass, color: anthracite

**Front-Board**

safety glass, backside black colored,  
600 x 1090 mm

**Top-shelf (860 x 490 mm)**

acrylic glass, color: white satined,  
integrated box to storage the cables  
of a laptop

**Base**

metal plate, 2 mm,  
color: anthracite, powder-coated

**Features:**

LCD front monitor  
LED reading lamp  
preparation for microphone  
soft cover for transport and storage  
rollerskate

all electrical properties use standard  
power supply of 230V/50Hz  
plug: schuko (CEE 7/4)

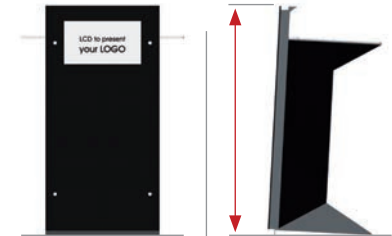


your logo  
(hotel or brand name)

18" wide screen  
monitor to present  
your LOGO

front view

height: 120 cm



cable inlet under  
the metal plate

# FEATURES

unique and originally designed by VENTA

## Features of VENTA products

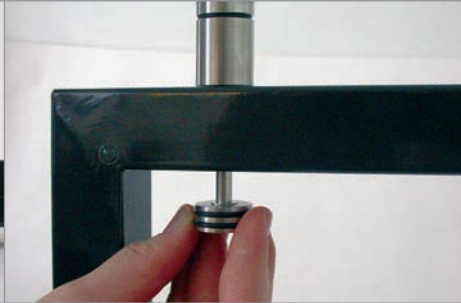
### feet-adjustment

The cocktail tables have three feet which are fixed. The fourth foot is adjustable. You can use your own foot to adjust easily the stability.



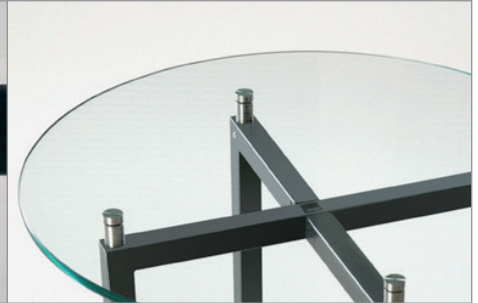
### glass-top mounting

The cocktail tables and most of the buffet tables have a special feature to fix the glass-top to the base. The screw is mounted undetachable on the base.



### glass-top quality

All glass-tops are produced as safety glass. In case of damage, they will break into small pieces to avoid any injury.



### trolleys for storage

For almost all VENTA products we offer trolleys to store the goods. You can store ten cocktail tables in a trolley in less than 0,6m<sup>2</sup>.



### foldable furniture

Nearly all VENTA products are foldable.



### stackable furniture

The stools can be stacked up to ten pieces.





**VENTA**  
BY BÜCHIN DESIGN

## Features

**All VENTA furniture has special features that make our exclusive products distinctive and unique. Each individual product was designed as a foldable, stackable or modular system, so our high-quality furniture can always be securely stored, taking up very little space.**

A matching trolley system is available for all VENTA furniture items, where the table parts can be stacked individually and secured in place against one another.

All VENTA furniture is put together without the use of any tools and there are no parts that can get lost. The connecting elements between the table frame and table-top are always made of stainless steel and are produced using high-precision lathes. The consistent quality of our products is ensured through regular physical controls.

VENTA products are designed as foldable, stackable or modular systems, enabling our furniture to be stored securely and using very little space. We also offer additional equipment for many VENTA products to make them even more simple and convenient to manage. All foldable tables can be equipped with rollerskates, for example. This enables the buffet tables to be moved around the room quickly and easily without having to carry them or take them apart and put them together again.

# Material + Color

BASIC | OPTION | CUSTOMIZED



## Büchin Design offers a wide range of materials and colors in three categories **BASIC**, **OPTION** and **CUSTOMIZED**.

Most of the VENTA products contain more than one material. If you choose one part of a model in the higher category, all the other materials and colors can also be taken in the higher category.

All VENTA items have a unique five-digit item-number.

example: 23001 for the cocktail table\_SET\_70

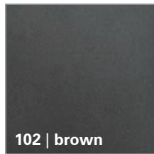
To define the material+color of the model, just add the three-digit material code.

example: 23001 + 100 (base frame = anthracite) + 300 (table-top = glass, transparent) + 300 (lower-tray = glass, transparent).

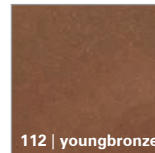
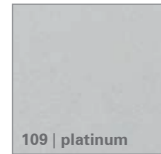
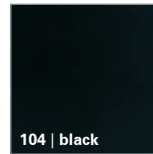
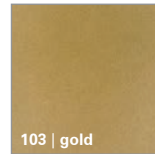


## Metal | color options

### BASIC | three colors



### OPTION | five colors

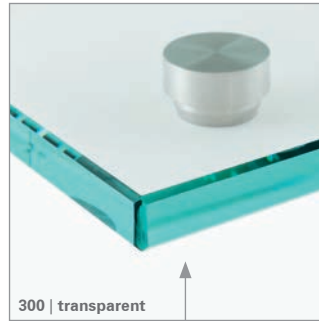


### CUSTOMIZED | select your color from IGP-range (number 58 / color code: IGP DURA face/pearl mica effect)

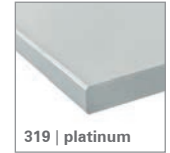


## Glass | color options

### BASIC | only transparent glass (floatglass)



### OPTION | eight colors



### CUSTOMIZED | three special metal colors or any color from RAL range

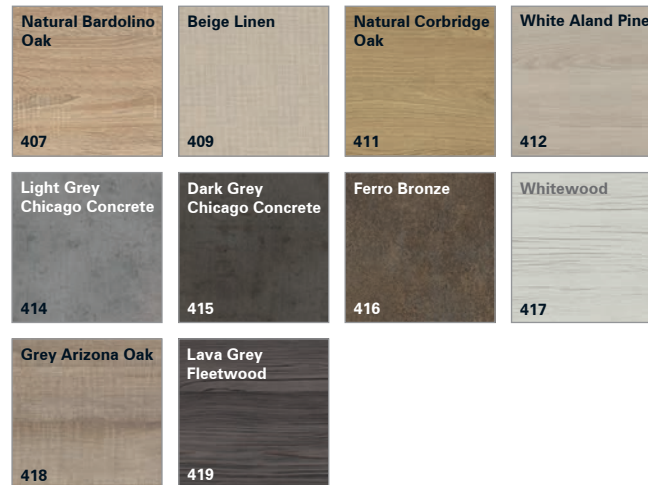


## Compact panel | color options

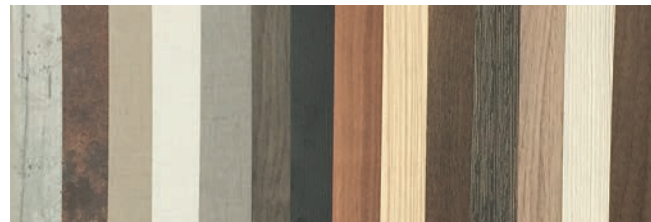
### BASIC | two decor options



### OPTION | ten decor options



**CUSTOMIZED** | any decor from EGGER-range which is available as compact panel (thickness of 10 mm, black core)



# Chipboard decor | color options

## BASIC | two decor options



decor name

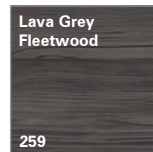
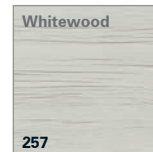
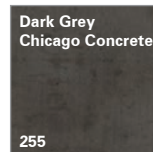
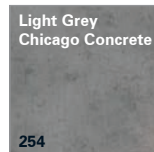
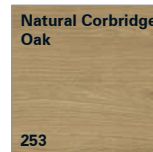
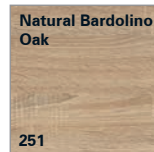
color-code

melamine-faced chipboard, 19 mm,  
decor similar to HPL

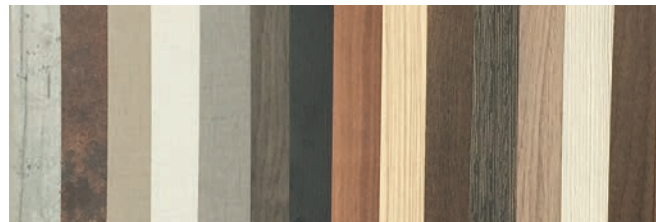
table-top material:  
compact panel, 10 mm  
(black core)



## OPTION | nine decor options

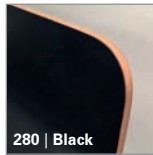


CUSTOMIZED | any decor from EGGER-range which is available as HPL and possible to glue on a chipboard, 19 mm



## Plywood with HPL | color options

### BASIC | two decor options



color-code



### OPTION | one decor option



**CUSTOMIZED** | any decor from the range of Presswerk Mainleus GmbH which is available and can be glued on plywood, 10 mm (bended)



Artificial leather | color options

**BASIC | two decor options**



600 | Sisal



601 | Black

color-code



**OPTION | one decor option**



604 | Linen

**CUSTOMIZED | any color from Valencia-range (company: Spradling)**



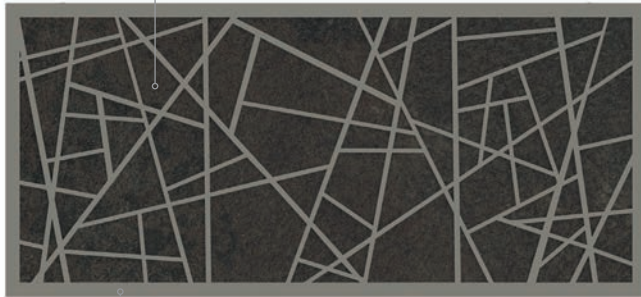
The images of the colors are similar but not binding.

# Polyester | color options

## BASIC | three decor variations

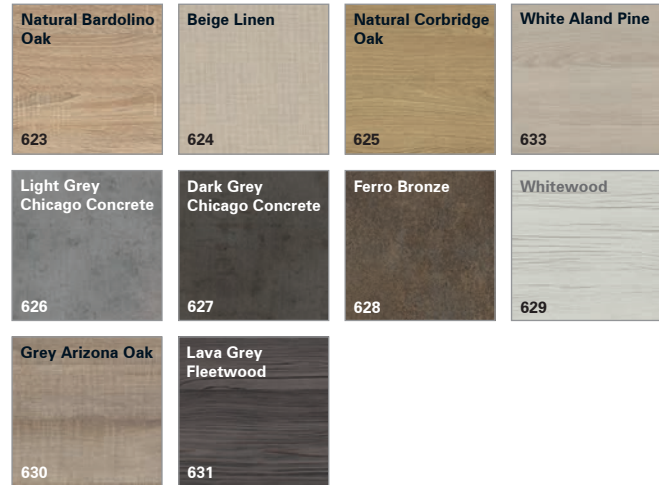


cover on the back in polyester  
example: polyester block-out, ceramic anthracite printed, VENTA-Code: 622

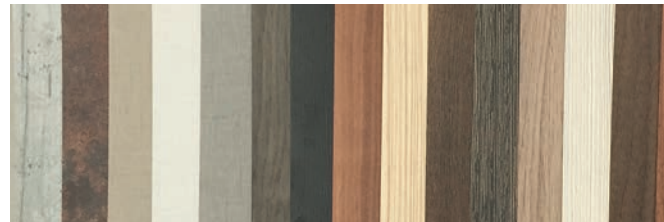


metal part in IGP-color  
example: champagne, VENTA-Code: 101

## OPTION | ten decor variations



## CUSTOMIZED | any decor from EGGER-range printed on fabric material



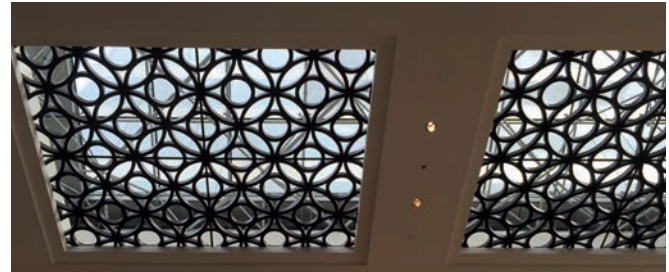


## Customized decor

example | „CIRCLE“ decor at the ceiling in a hotel lobby



detail view of the decor

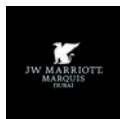


decor transferred to the FRONTBLIND

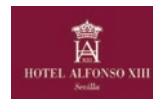


## References

VENTA has designed exclusive furniture for the hotel, events and catering industry throughout the world. Our clients are based in a wide range of locations. You can find a selection of the hotels and locations fitted with our VENTA products in the references below as well as on our website [www.ventadesign.com](http://www.ventadesign.com).

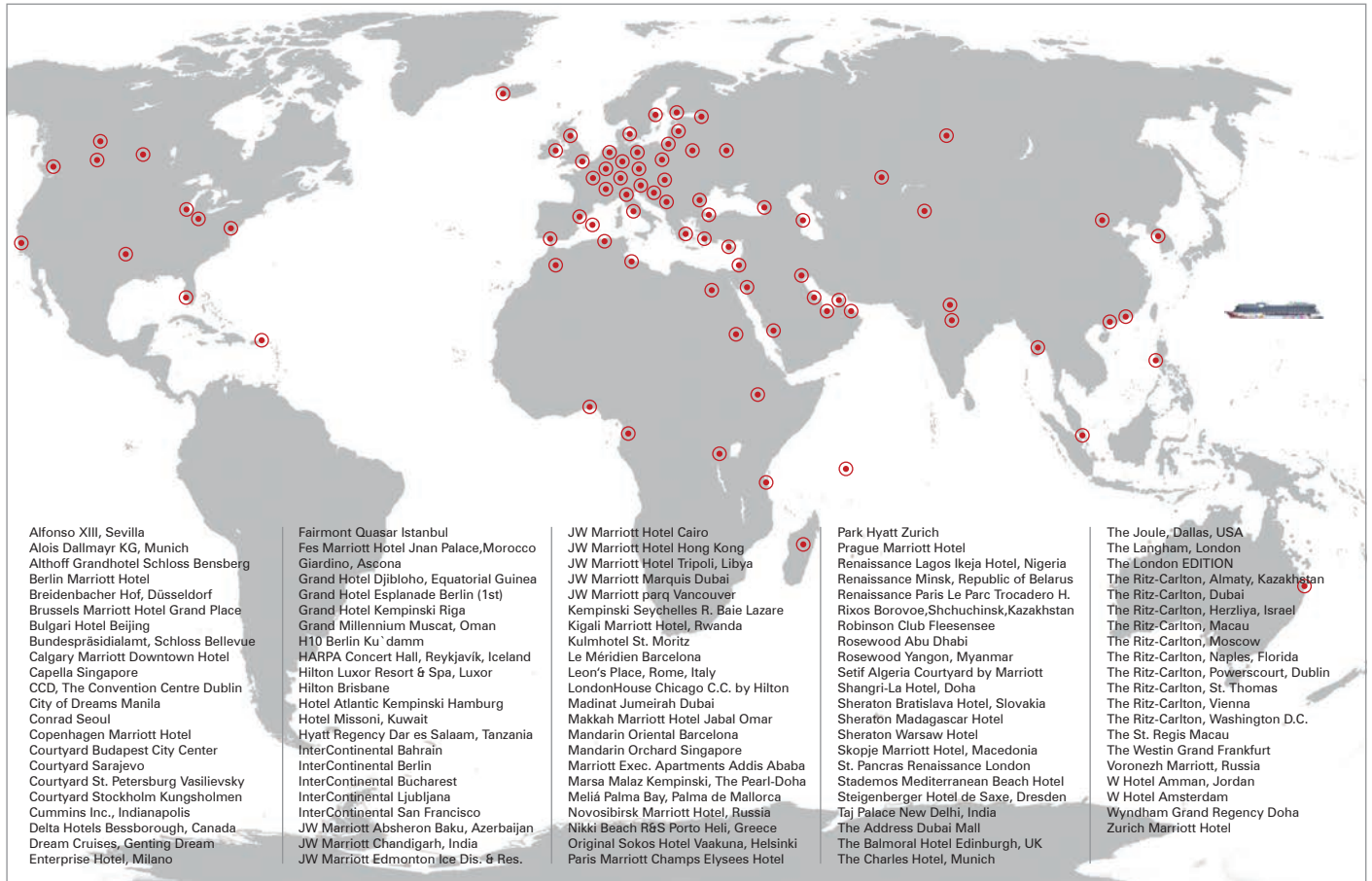


BVLGARI



MISSONI





[www.ventadesign.com](http://www.ventadesign.com)

visit our showroom:

Büchin Design GmbH & Co. KG | Forckenbeckstr. 9-13 | 14199 Berlin / GERMANY | [info@ventadesign.de](mailto:info@ventadesign.de) | phone: +49-30-28045550 | Fax +49-30-2804555-28