

# INTERMETAL

Contract Furniture Manufacturer

## BUFFET & COCKTAIL TABLE COLLECTION



mobile | versatile | durable





# BUFFET & COCKTAIL TABLES



Intermetal, the premier Contract Furniture Manufacturer has been manufacturing a wide range of products for the Hospitality furniture market for over two decades. CUBO and NEST is a series of contemporary buffet and cocktail tables that will definitely influence the aesthetics in any room. While each of the collections has its own distinct features, what remains the same is that each is versatile, resilient and offers customers the flexibility to personalize rooms to meet exacting customer and event requirements.

Manufactured in a variety of shapes and sizes, the table frames are available in a powder coated, chrome plated or brushed stainless steel finish. Customers also have the option of tempered glass tops or they can select from a wide range of materials. Without the need for table cloths or skirting, CUBO and NEST not only look great, but save the user time and money as they are virtually maintenance free.





## NEST

Versatile, durable and space saving makes the NEST Buffet Tables the perfect choice for the F&B industry.

Easy to maintain, the tables are the perfect choice as they offer more form and function, are easy to configure and with the option of bridging one table to another, gives endless possibilities for buffet layouts. When not in use, the tables are easily nested and space can be freed up in minutes.

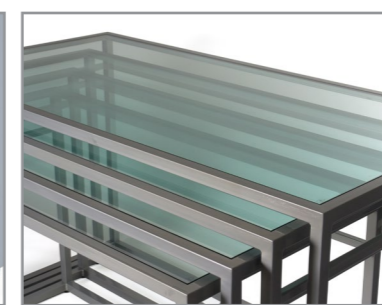




**INTERMETAL**  
SBU 2001



Castors Option\*



Nesting



**SIZES:**

Model	Length (cm)	Width (cm)	Height (cm)
SBU 2001A	168	85	90
SBU 2001B	158	80	85
SBU 2001C	148	75	80
SBU 2001D	138	70	75

\* Add 5cm to table height

**Table Frame:** 30 x 30 x 1.2mm steel square tube

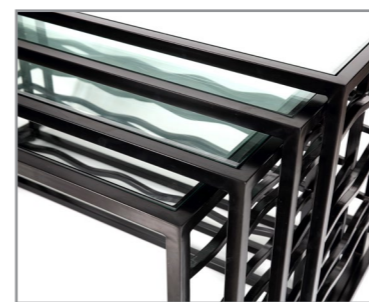
**Frame Finish:** Powder coated or brushed stainless steel

**Table Top:** 10 mm clear tempered glass

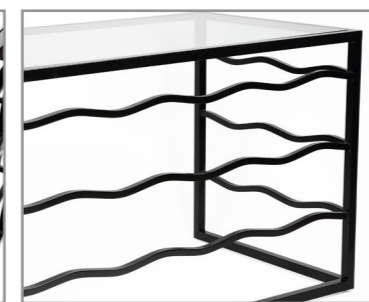
**Features:**

- Nestable
- Space Saving
- Adjustable Gliders





Nesting



Wave Design

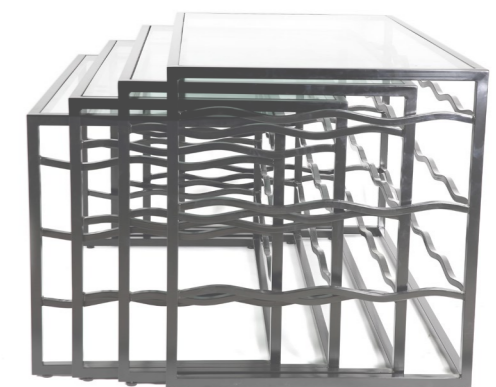
**SIZES:**

Model	Length (cm)	Width (cm)	Height (cm)
SBU-W2001A	168	85	90
SBU-W2001B	158	80	85
SBU-W2001C	148	75	80
SBU-W2001D	138	70	75

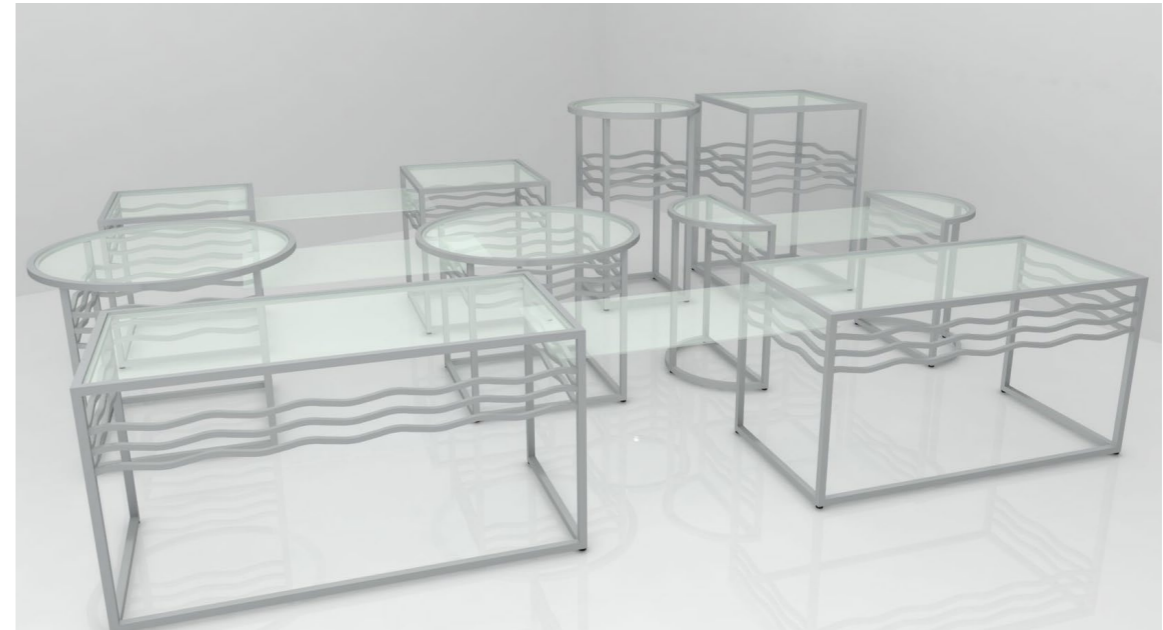
**Table Frame:** 30 x 30 x 1.2mm steel square tube  
**Frame Finish:** Powder coated  
**Table Top:** 10 mm clear tempered glass

**Features:**

- Nestable
- Space Saving
- Adjustable Gliders
- Wave Design
- Castors Option







Bridging

Wave Design

Various Sizes

**SIZES:**

Model	Length (cm)	Width (cm)	Height (cm)
BBU-W3001A	168	80	90
BBU-W3001B	158	80	85
BBU-W3001C	80	80	90
BBU-W3001D	80	80	85
BBU-W3001E	80x40 Half Round		90
BBU-W3001F	80x40 Half Round		85
BBU-W3001G	115 Diameter		90
BBU-W3001H	115 Diameter		85
BBU-W3001I	70 Diameter		105
BBU-W3001J	70	70	105

**Table Frame:** 30 x 30 x 1.2mm steel square tube

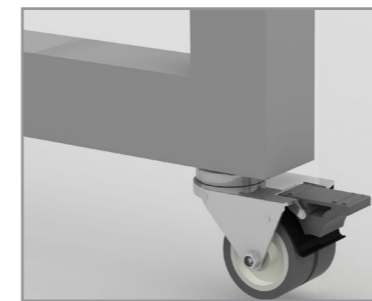
**Frame Finish:** Powder coated

**Table Top:** 10 mm clear tempered glass

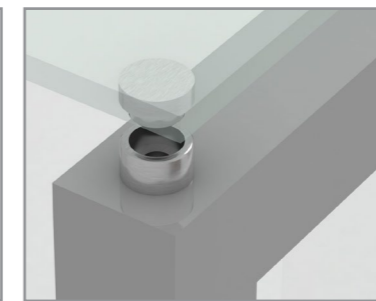
**Features:**

- Bridging Option
- Multi Height Option
- Adjustable Gliders
- Wave Design





Locking Wheels



Stainless Steel Flange



Nesting

**SIZES:**

Model	Length (cm)	Width (cm)	Height (cm)
SBU 2002A	196	80	90
SBU 2002B	180	80	81
SBU 2002C	80	80	72

**Table Frame:** 50 x 50 x 3mm aluminium square tube

**Frame Finish:** Powder coated or brushed stainless steel

**Table Top:** 10 mm clear tempered glass

**Features:**

- Stainless Steel Flange secures glass in place
- Nestable
- Space Saving
- Mobile



The logo for CUBO, featuring a stylized 'C' inside a square frame followed by the word "UBO" in a sans-serif font.

Impress your guests with CUBO, a range of folding buffet tables that are available in a range of shapes and sizes. Room set ups are easy as the tables unfold into position and are just as easy to store using Intermetal's unique mobile table trolley that transports the folded tables and glass tops safely.

Manufactured in aluminium or steel, quality and durability is guaranteed. A range of buffet tables that will definitely add a sense of style, form and functionality to any room layout.





IFC 844 Trolley



Easy To Store



Flat Folding

**SIZES:**

Model	Length (cm)	Width (cm)	Height (cm)
IFC 844A	70 Diameter		105
IFC 844B	70	70	105

**Table Frame:** 30 x 30 x 1.2mm steel square tube

**Frame Finish:** Powder coated, chrome plated or brushed stainless steel

**Table Top:** 10 mm clear tempered glass

**Features:**

- Foldable
- Adjustable Gliders
- Storage Trolley, Capacity - 10 Units : 10 Frames, 10 Glass Tops & 10 Bottom Glass
- Stainless Steel Flange secures glass in place
- Rubber Levelling Rings





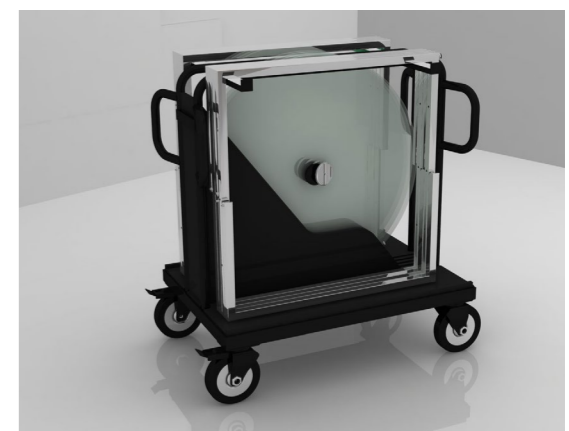
Stainless Steel Flange



Round Glass



Square Glass



IFBU 847 Trolley

**SIZES:**

Model	Length (cm)	Width (cm)	Height (cm)
IFBU 847A	90 Diameter		75/90/105/120
IFBU 847B	90	90	75/90/105/120
IFBU 847C	110 Diameter		75/90/105/120

**Table Frame:** 30 x 30 x 1.2 mm steel square tube

**Frame Finish:** Powder coated, chrome plated or brushed stainless steel

**Table Top:** 10 mm clear tempered glass

**Features:**

- Foldable
- Adjustable Gliders
- Storage Trolley, Capacity : 4 Units : 4 Frames & 4 Glass Tops
- Stainless Steel Flange secures glass in place
- Rubber Levelling Rings





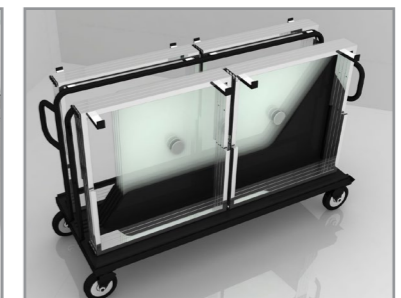
**INTERMETAL**  
IFBU 849



Stainless Steel Flange



Rubber Levelling Rings



IFBU 849 Trolley

**SIZES:**

Model	Length (cm)	Width (cm)	Height (cm)
IFBU 849A	180	90	75/90/105/120
IFBU 849B	180	70	75/90/105/120

**Table Frame:** 30 x 30 x 1.2mm steel square tube

**Frame Finish:** Powder coated, chrome plated or brushed stainless steel

**Table Top:** 10 mm clear tempered glass

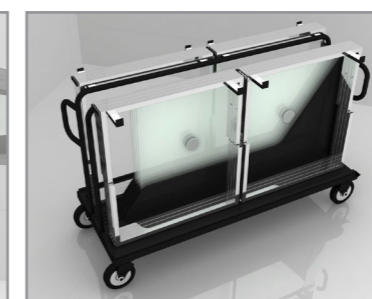
**Features:**

- Foldable
- Adjustable Gliders
- Storage Trolley, Capacity - 4 Units : 8 Frames & 4 Glass Tops
- Stainless Steel Flange secures glass in place
- Rubber Levelling Rings





Frame Secures to Base



IFC 850 Trolley

**SIZES:**

Model	Length (cm)	Width (cm)	Height (cm)
IFC 850A	180	90	75 / 90 / 105
IFC 850B	180	70	75 / 90 / 105
IFC 850C	90	90	75 / 90 / 105
IFC 850D	70	70	75 / 90 / 105

**Table Frame:** 30 x 30 x 1.2mm steel square tube

**Frame Finish:** Powder coated and brushed stainless steel

**Table Top:** 30 x 30 mm steel or stainless steel tube with 10 mm clear tempered glass / 18 mm Pre-laminated top / 20 mm Laminated top

**Features:**

- Foldable
- Adjustable Gliders
- Storage Trolley, Capacity - 4 Units : 4 Frames & 4 Glass Tops





Folding



Stainless Steel Flange



IFC 851 Trolley

**SIZES:**

Model	Length (cm)	Width (cm)	Height (cm)
IFC 851	150	75	85
	100	50	26
	60	30	20

**Table Frame:** : 30 x 30 x 1.2mm steel square tube

**Frame Finish:** Powder coated and brushed stainless steel

**Table Top:** 10 mm clear tempered glass

**Features:**

- Foldable
- Adjustable Gliders
- Storage Trolley, Capacity – 2 Units : 2 Frames & 6 Glass Tops
- Stainless Steel Flange secures glass in place





**SIZES:**

Model	Length (mm)	Width (mm)	Height (mm)
ES 1001A	150	150	55 / 110
ES 1001B	225	225	55 / 110 / 165 / 220
ES 1001C	300	300	55 / 110 / 165 / 220 / 275 / 330

**Elevation Frame:** 19 mm diameter steel tube

**Frame Finish:** Powder coated

**Top:** 8 mm clear tempered glass

**INTERMETAL**

Elevation Stands



